



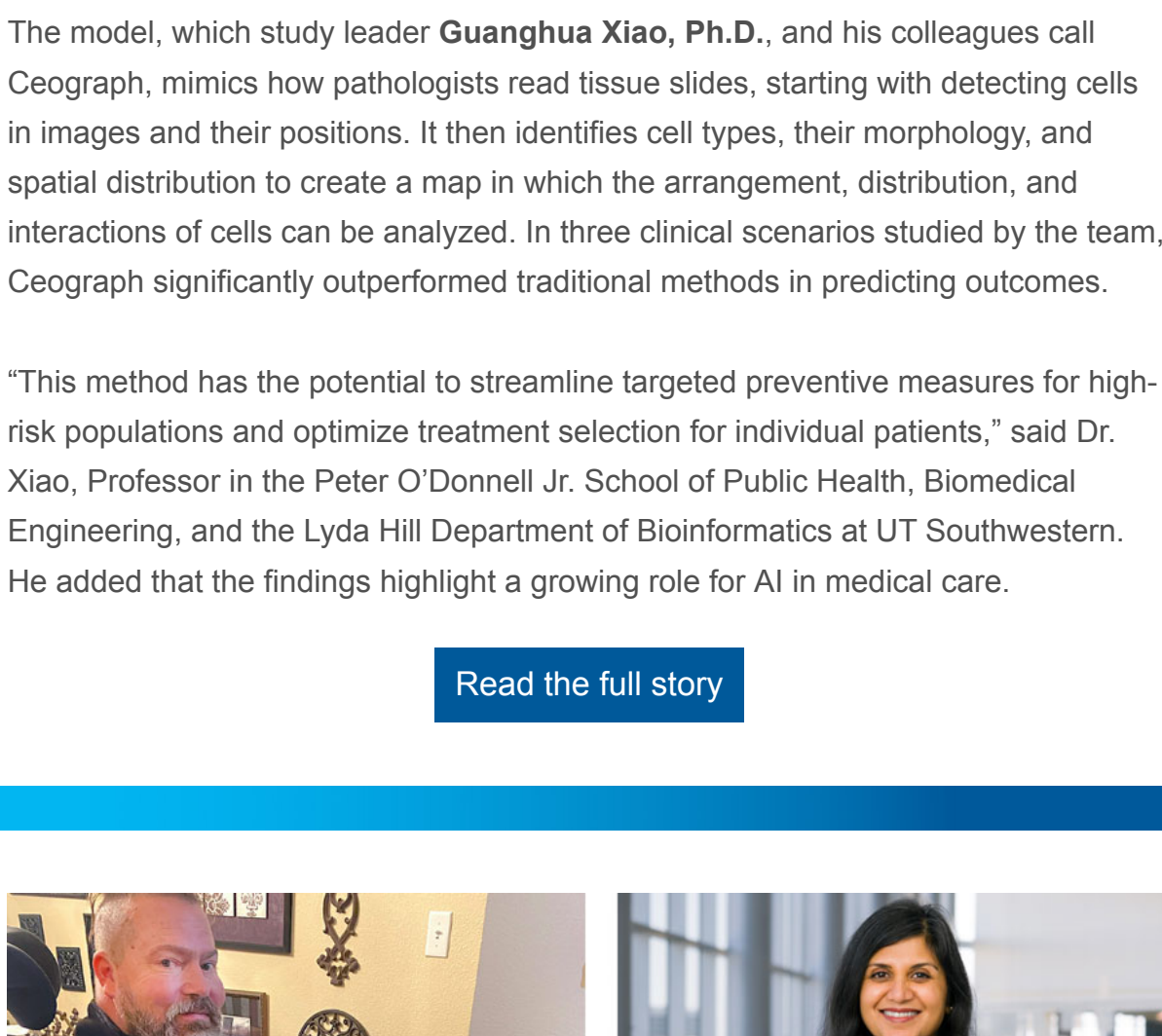
New Faculty Research Forum nurtures collaboration, innovation

At this year's **New Faculty Research Forum**, 18 newly appointed Assistant Professors from 11 departments shared their lab's mission and research focus with the UT Southwestern community. The forum, which brings together established investigators and those who are just beginning their research journey, helps foster interdisciplinary collaborations and cultivate an environment where innovation flourishes.

Nobel Laureate **Joseph L. Goldstein, M.D.**, Chair and Professor of Molecular Genetics, opened this year's event by offering advice on how to become a successful scientist and urging young investigators to have "technical courage." That's a term he and his scientific partner, fellow Nobel Laureate **Michael S. Brown, M.D.**, often use to describe a sense of confidence and adventure that emerges from sound training in basic or clinical research, as well as the courage to think big and use new approaches to solve novel problems.

Learn more about the forum and this year's featured researchers through the link below. (Pictured above is **Edward Grow, Ph.D.**, Assistant Professor in the Cecil H. and Ida Green Center for Reproductive Biology Sciences.)

[Read more](#)



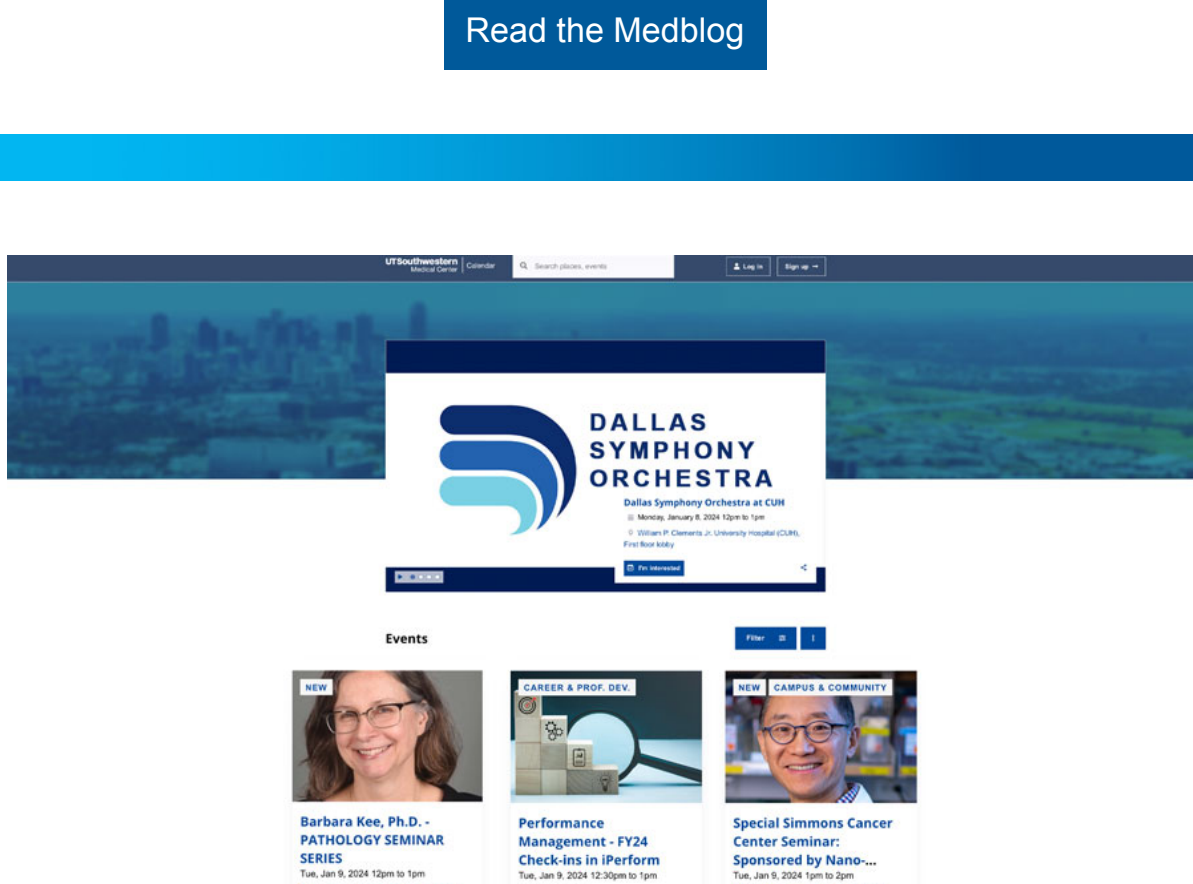
AI accurately predicts cancer outcomes from tissue samples

UTSW researchers have developed a new artificial intelligence model that analyzes the spatial arrangement of cells in tissue samples and can accurately predict outcomes for cancer patients. The discovery, published in *Nature Communications*, marks an important advancement in the use of AI for cancer prognosis and personalized treatment strategies.

The model, which study leader **Guanghua Xiao, Ph.D.**, and his colleagues call Ceograph, mimics how pathologists read tissue slides, starting with detecting cells in images and their positions. It then identifies cell types, their morphology, and spatial distribution to create a map in which the arrangement, distribution, and interactions of cells can be analyzed. In three clinical scenarios studied by the team, Ceograph significantly outperformed traditional methods in predicting outcomes.

"This method has the potential to streamline targeted preventive measures for high-risk populations and optimize treatment selection for individual patients," said Dr. Xiao, Professor in the Peter O'Donnell Jr. School of Public Health, Biomedical Engineering, and the Lyda Hill Department of Bioinformatics at UT Southwestern. He added that the findings highlight a growing role for AI in medical care.

[Read the full story](#)



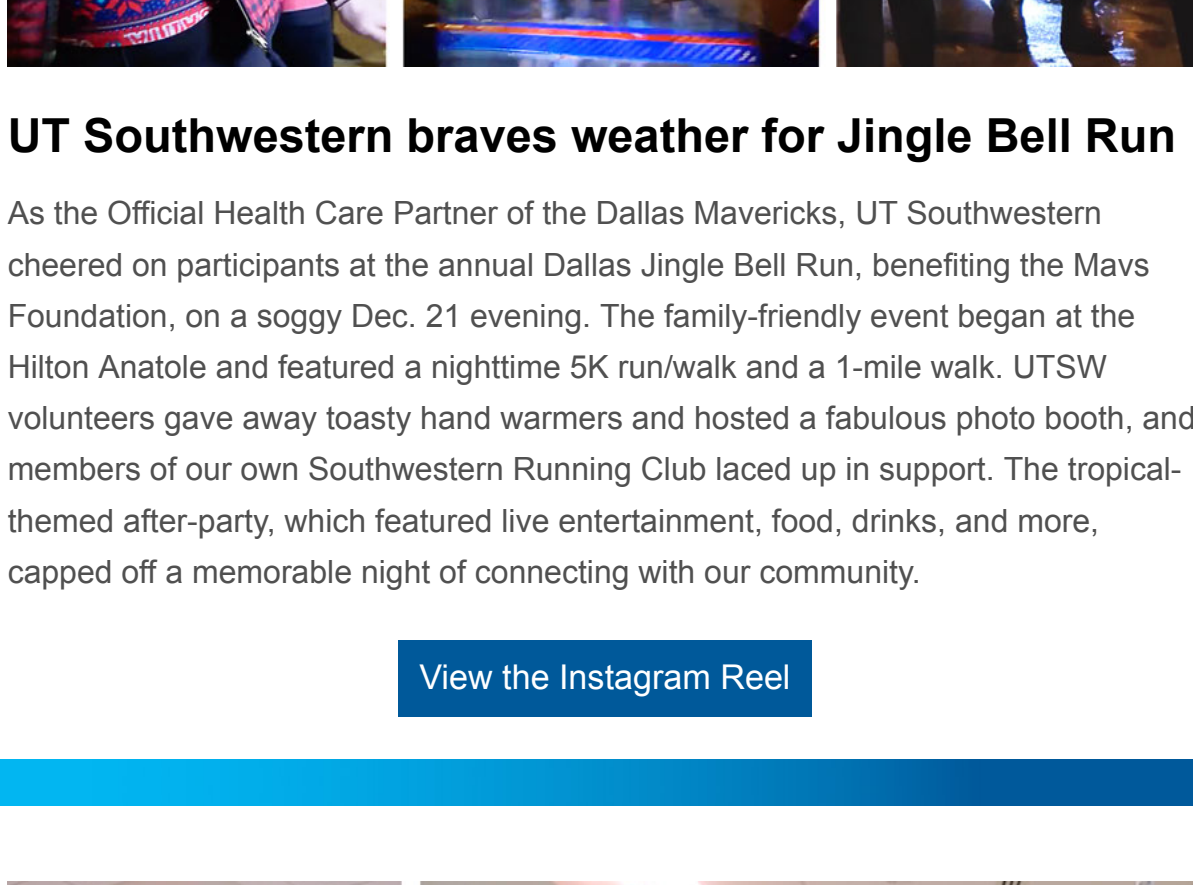
Making the road ahead much smoother

As a doctor who cares for patients with multiple sclerosis and ALS, **Anjali Shah, M.D.**, Associate Professor in the Department of Physical Medicine & Rehabilitation, has seen the toll that ill-fitting wheelchairs can take. She's also witnessed the frustration of patients who must wait months, or even years, to get the right equipment.

That's why, as Director of UT Southwestern's [Wheelchair Seating and Mobility Clinic](#), she developed a model of care that connects patients with their ideal device and reduces wait times. Dr. Shah's streamlined approach has already been adopted by vendors and clinics across the country. Her ultimate goal is to make life easier and help foster independence for patients like Glen Denehie, a father of two who has a degenerative form of muscular dystrophy.

In a new MedBlog, Mr. Denehie said, "Working with Dr. Shah's team cut months off my expected wait time, and my new power wheelchair with seat elevation makes it possible for me to cook for my kids, teach, and even play my favorite sport: soccer!"

[Read the Medblog](#)



Never miss a UTSW event with 'Digest' reminders

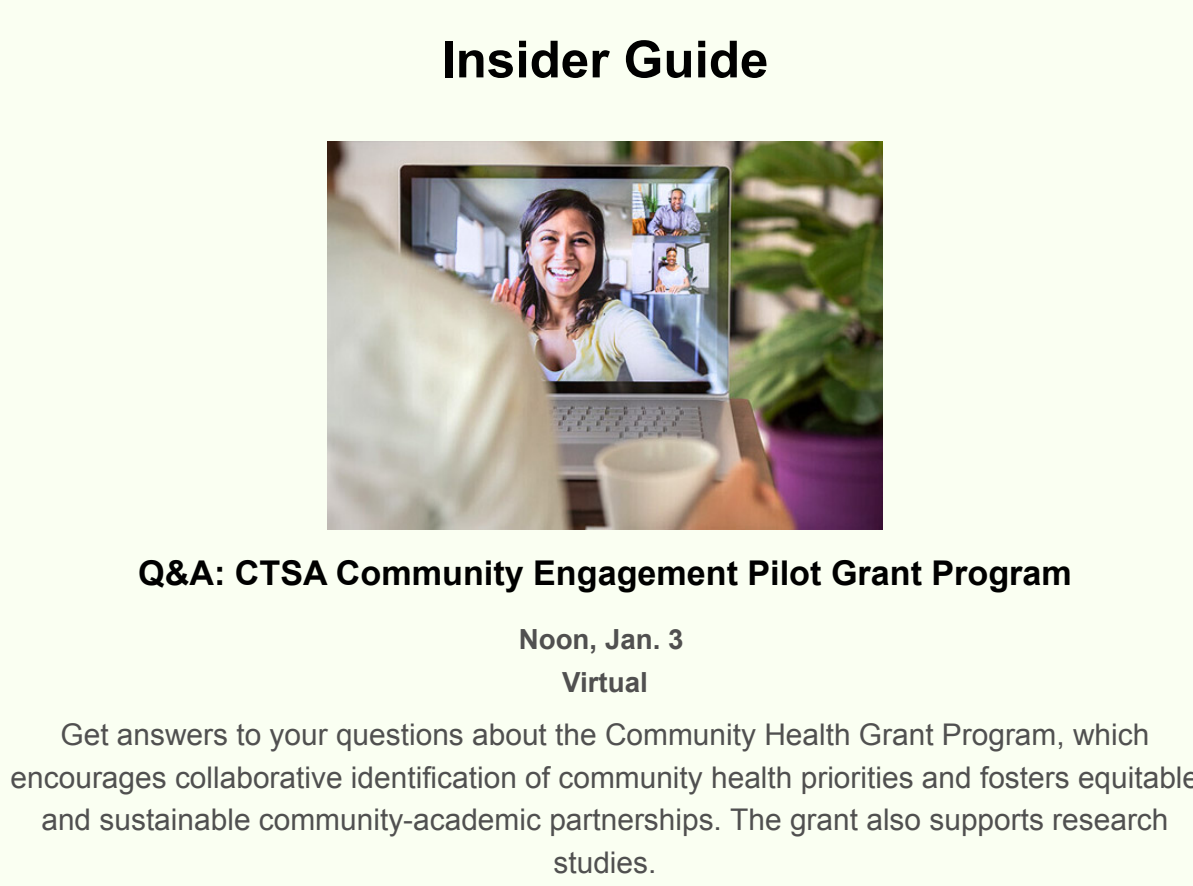
At UT Southwestern, there's always something interesting going on. Whether it's a seminar, a dissertation defense, an essential leadership talk, a health fair, or something else related to our mission, we are always on the go.

Most UTSW events are listed on our [Events Calendar](#), but keeping up with items that interest you can be a challenge. Did you know that you can configure the "Events Digest" feature so you will be alerted weekly about upcoming happenings that fit your customized parameters?

To set up the Digest feature:

1. Navigate to [the calendar](#).
2. Log in with your UTSW credentials at the top of the page.
3. Go to "Settings" in the drop-down menu by your avatar.
4. Click "Communications," then "Digest," and then "Create an Email Digest."

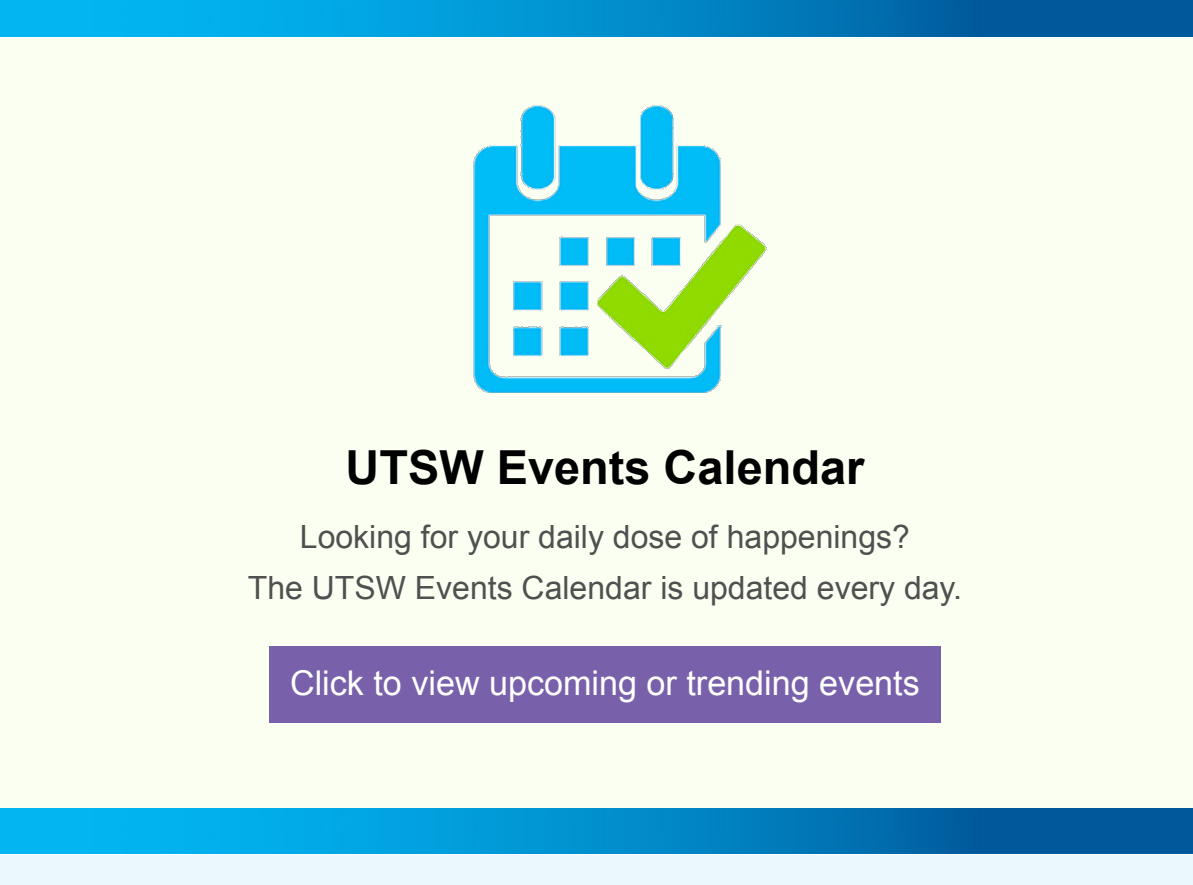
Ta-da – and just like that, you're even more in the know!



UT Southwestern braves weather for Jingle Bell Run

As the Official Health Care Partner of the Dallas Mavericks, UT Southwestern cheered on participants at the annual Dallas Jingle Bell Run, benefiting the Mavs Foundation, on a soggy Dec. 21 evening. The family-friendly event began at the Hilton Anatole and featured a nighttime 5K run/walk and a 1-mile walk. UTSW volunteers gave away toasty hand warmers and hosted a fabulous photo booth, and members of our own Southwestern Running Club laced up in support. The tropical-themed after-party, which featured live entertainment, food, drinks, and more, capped off a memorable night of connecting with our community.

[View the Instagram Reel](#)



Moxi by the numbers: ~27,000 deliveries and more

Moxi, the bright-eyed robot units that went online at Clements University Hospital in December 2022, have proved to be a major timesaver for nurses and patient care technicians (PCTs). The robot fleet has doubled from two to four in its first year and carries telemetry boxes between Central Monitoring and the nursing units. They have also started to help the hospital pharmacy's Meds-to-Beds Program by delivering prescriptions to patients being discharged to streamline departures.

The ultimate goal of introducing Moxi was to give nurses and PCTs more time to focus on direct patient care. Here's a snapshot of the robots' busy first year:

- 4,590+ miles traveled
- 11,800+ total active hours
- Nearly 27,000 deliveries
- 13.3 million+ steps saved for staff

Nursing Informatics continues to evaluate how Moxi can help health care workers.

For more on the roving robots, check out [Center Times Plus](#).

Insider Guide



Q&A: CTSA Community Engagement Pilot Grant Program

Noon, Jan. 3
Virtual

Get answers to your questions about the Community Health Grant Program, which encourages collaborative identification of community health priorities and fosters equitable and sustainable community-academic partnerships. The grant also supports research studies.

[Information](#)

Biophysics seminar series presents Chia-Hsueh Lee, Ph.D.

Noon-1 p.m., Jan. 4
T. Boone Pickens Biomedical Building, ND8.218

The Department of Biophysics' monthly seminar series, held the first Thursday of each month, will host Dr. Lee, of St. Jude's Children's Research Hospital. His talk is titled "Structures and mechanisms of lipid and neurotransmitter transporters."

[Details](#)

UTSW Events Calendar

Looking for your daily dose of happenings?
The UTSW Events Calendar is updated every day.

[Click to view upcoming or trending events](#)

Share your 'Insider' suggestions

This is an internal email and not intended for external distribution. Please do not forward.
Copyright 2023 UT Southwestern Medical Center. All rights reserved. UTSW Insider is a publication of Communications, Marketing, and Public Affairs (CMPA) at UT Southwestern Medical Center.