



### Food Is Medicine research on the rise at UTSW

Medically tailored meals and groceries, produce prescriptions, and nutrition coaching are all part of the Food Is Medicine (FIM) movement, which is providing a fresh approach to fighting food insecurity. UT Southwestern physicians, dietitians, and faculty members of the O'Donnell School of Public Health are launching several new research initiatives that will put the principles of FIM into action in Dallas County, where one in eight residents don't have access to enough affordable, nutritious food.

**Jaclyn Albin, M.D., CCMS, DipABLM**, an Associate Professor in the Departments of Internal Medicine and Pediatrics and the Director of the Culinary Medicine Program at UTSW at RedBird, will dive deep into the topic of Food Is Medicine in her [President's Lectures Series](#) presentation tomorrow at 4 p.m. in the Tom and Lula Gooch Auditorium on South Campus. In a new [Medblog](#), Dr. Albin shares details about two FIM research projects that are underway in our local community.

[Register for PLS](#)

The UT Southwestern Health System's [Celebration of Excellence](#) (CoE) is just two weeks away, on April 26, and there will be several special guests in this year's Arena of Excellence.

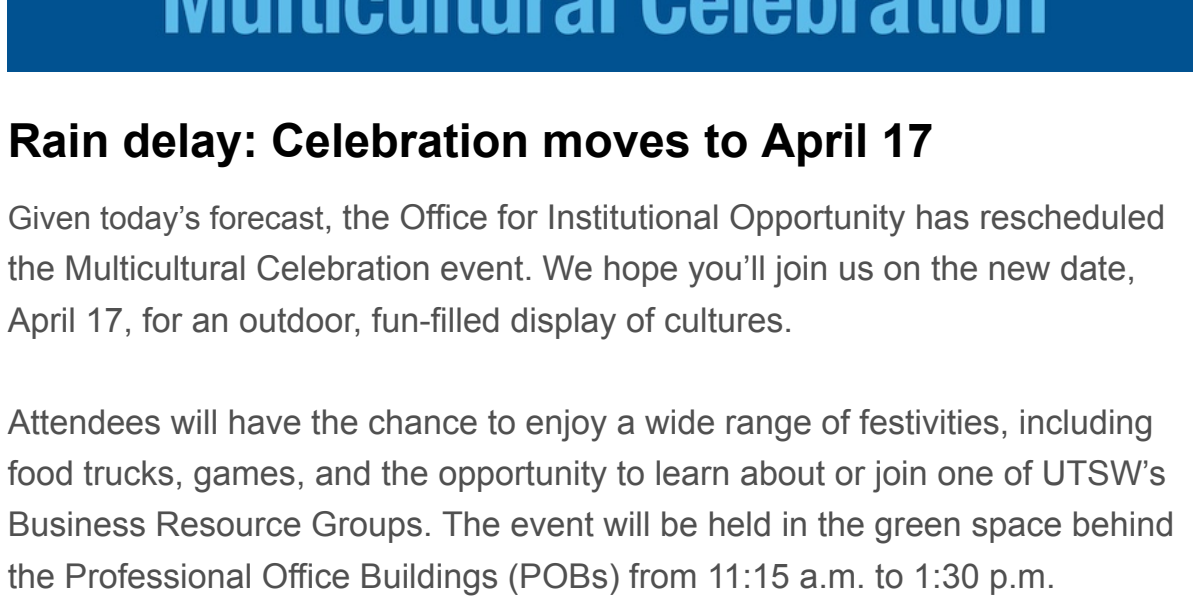
You'll have a chance to interact with the delivery robot known as Moxi, which retrieves and transports items for nurses and patient care techs at Clements University Hospital (CUH). A group from Nursing Informatics will be on hand to showcase Moxi – a great example of how the Health System continues to implement technology to create a more efficient workday for teams.

And don't miss the tail-wagging good fun with the therapy dogs who will also be afoot, coordinated through our Volunteer Services team. Their day job is helping soothe and comfort patients and boost the morale of team members at CUH and Zale Lipshy Pavilion.

These guests will be joined by representatives from various UTSW departments, who will share information about employee and campus resources.

We hope you join us at the CoE and share in the conversations about improving the workplace and celebrating Health System successes.

See the full [CoE schedule of activities](#) and [register now](#).



## Multicultural Celebration

### Rain delay: Celebration moves to April 17

Given today's forecast, the Office for Institutional Opportunity has rescheduled the Multicultural Celebration event. We hope you'll join us on the new date, April 17, for an outdoor, fun-filled display of cultures.

Attendees will have the chance to enjoy a wide range of festivities, including food trucks, games, and the opportunity to learn about or join one of UTSW's Business Resource Groups. The event will be held in the green space behind the Professional Office Buildings (POBs) from 11:15 a.m. to 1:30 p.m.

No registration is required to attend.

[More information](#)



### First peek: Eclipsing at UTSW

On Monday, UT Southwestern's learners, faculty, and staff witnessed a once-in-a-lifetime total solar eclipse. Equipped with protective eyewear, they were out in full force across campus and beyond to catch a glimpse of the extraordinary event.

We'll have even more photos for you next week, but for now, head to our Instagram page to catch some great shots of the campus celebrations.

[Instagram](#)



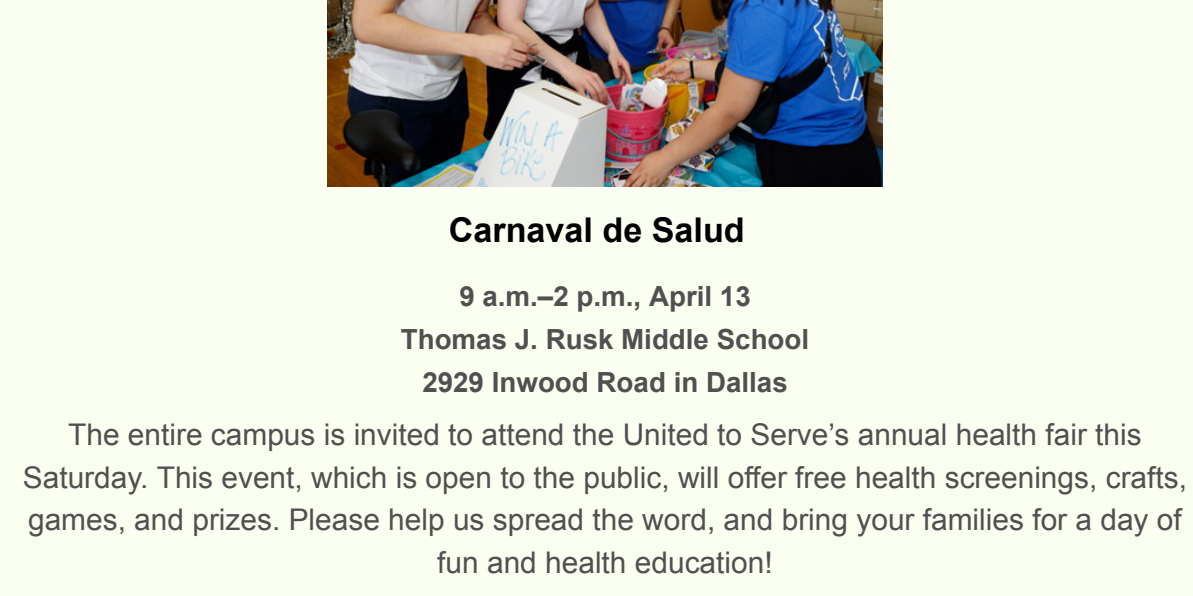
### Richard Wu – Art & Medicine Collide

The Association of American Medical Colleges (AAMC) recently spotlighted **Richard Wu**, a fourth-year UTSW medical student, for his exceptional artistic talents. With an appreciation for both science and art, Richard was drawn to a career in medicine, where his passions have intersected. In the AAMC article, he explains how his creative pursuits will make him a better doctor, pointing to a growing body of research that suggests the humanities enhance the practice of medicine. "The arts heighten observational skills, improve empathy, and reduce burnout," he explains.

As he completes the final stretch of medical school, he is eager to walk across the stage and earn his degree this May. Richard will pursue a psychiatry residency at Johns Hopkins Hospital and hopes to turn to his artistic passions for solace and inspiration as time allows.

Pictured in the collage above, from left to right: Migraine Headache (published in *Lifelines*); Creating Magic (published in *The Exley*); Richard Wu; Blindness and Elephants (published in *The Blueshift Journal*); Chimera (published in *The Exley*).

[Read the feature](#)



### Some patient garages will go cashless May 1

Please be aware that the following patient parking garages at UT Southwestern will no longer accept cash after April 30:

- Garages A and B at Clements University Hospital (CUH)
- Cancer Care Outpatient Building parking garage
- East Campus parking garage (near the Harold C. Simmons Radiation Oncology buildings)

Payment may be made via credit/debit card at the walk-up payment machines or the exit gates. This is also being communicated with patients via MyChart.

### COVID-19: Latest Clements University Hospital (CUH) and campus numbers

UTSW COVID-19 Census Update (CUH)	
April 9, 2024	COVID-19 Hospitalizations March 2020 – Present
Non-ICU	3
ICU	1
<b>Total in CUH</b>	<b>4</b>

UTSW COVID-19 Cases (Campus)		
Source of Infection	Week of 3/29 - 4/4	Cumulative Total 3/1/20 - 4/4/24
Off Campus (Community)	14	14,786
Campus	0	355
Pending Source of Infection	3	3
<b>Total</b>	<b>17</b>	<b>15,144</b>

## Insider Guide

**Carnaval de Salud**  
 9 a.m.–2 p.m., April 13  
 Thomas J. Rusk Middle School  
 2929 Inwood Road in Dallas

The entire campus is invited to attend the United to Serve's annual health fair this Saturday. This event, which is open to the public, will offer free health screenings, crafts, games, and prizes. Please help us spread the word, and bring your families for a day of fun and health education!

[More info](#)

**NAMIWalks North Texas 2024**  
 9–11:30 a.m., May 18  
 7300 Roughriders Trail in Frisco

Join the Department of Psychiatry during NAMIWalks North Texas to support mental health. NAMI North Texas is a grassroots organization that provides aid, advocacy, and public awareness to improve the lives of people with mental health conditions and their family members.

[Register](#)

**UTSW Events Calendar**  
 Looking for your daily dose of happenings?  
 The UTSW Events Calendar is updated every day.  
[Click to view upcoming or trending events](#)

[Share your 'Insider' suggestions](#)

This is an internal email and not intended for external distribution. Please do not forward. Copyright 2024 UT Southwestern Medical Center. All rights reserved. UTSW Insider is a publication of Communications, Marketing, and Public Affairs (CMPA) at UT Southwestern Medical Center.