



Residents explore 'Art of Neurology'

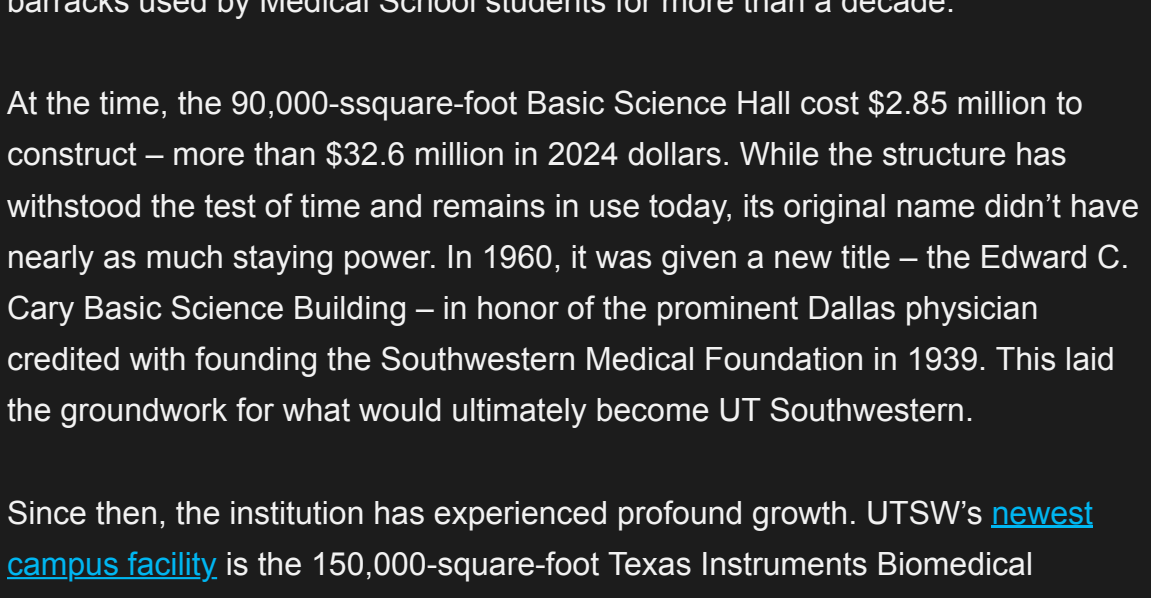
By immersing themselves in art, a group of UT Southwestern neurology residents is taking training beyond the clinic to hone valuable observational skills.

The Art of Neurology, a program launched in 2023, includes lectures and field trips to museums, where instructor **Alex Frolov, M.D.**, Assistant Professor of Neurology, teaches future physicians to look at the entirety of a painting *and* focus on the details.

"You can take that to the clinic," said Dr. Frolov, who created the program for neurology residents. "You're looking at the whole patient, you're looking at a part of the patient, you're looking at their life, their circumstances, and so on."

Topics rotate over 12-18 months and attendance is optional, but residents appreciate the fresh perspectives, said **Rumyar Ardakan, M.D.**, Chief Neurology Resident. "I realized there are so many subtleties in what we see, it's easy to walk by and miss it."

Read the full story in [Center Times Plus](#).



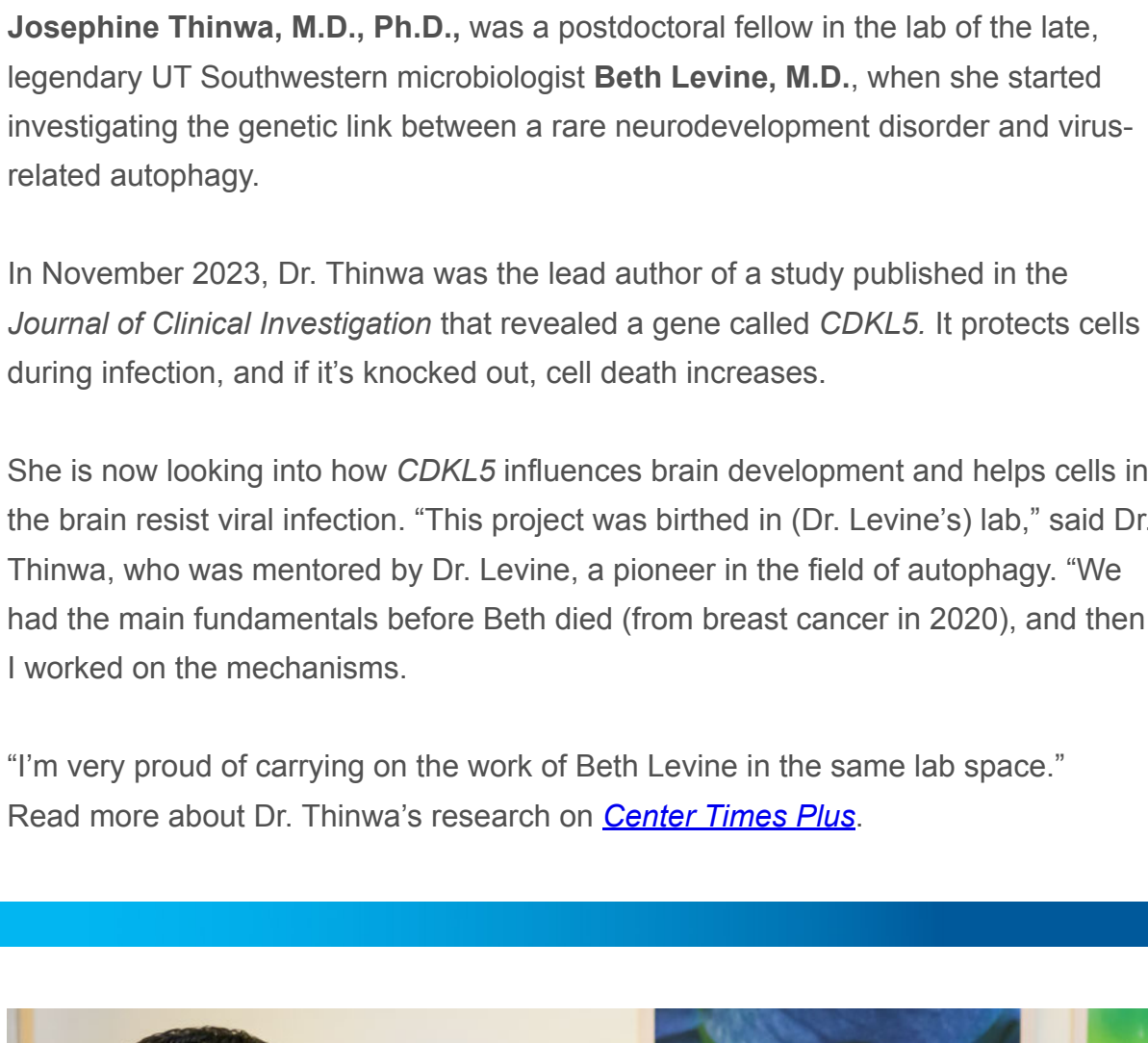
On this date in UTSW history ...

Jan. 29, 1955

On this day 69 years ago, the first permanent building on the UT Southwestern campus was dedicated, replacing the repurposed World War II surplus military barracks used by Medical School students for more than a decade.

At the time, the 90,000-square-foot Basic Science Hall cost \$2.85 million to construct – more than \$32.6 million in 2024 dollars. While the structure has withstood the test of time and remains in use today, its original name didn't have nearly as much staying power. In 1960, it was given a new title – the Edward C. Cary Basic Science Building – in honor of the prominent Dallas physician credited with founding the Southwestern Medical Foundation in 1939. This laid the groundwork for what would ultimately become UT Southwestern.

Since then, the institution has experienced profound growth. UTSW's [newest campus facility](#) is the 150,000-square-foot Texas Instruments Biomedical Engineering and Sciences Building on the East Campus, which was for \$120 million and dedicated in October.



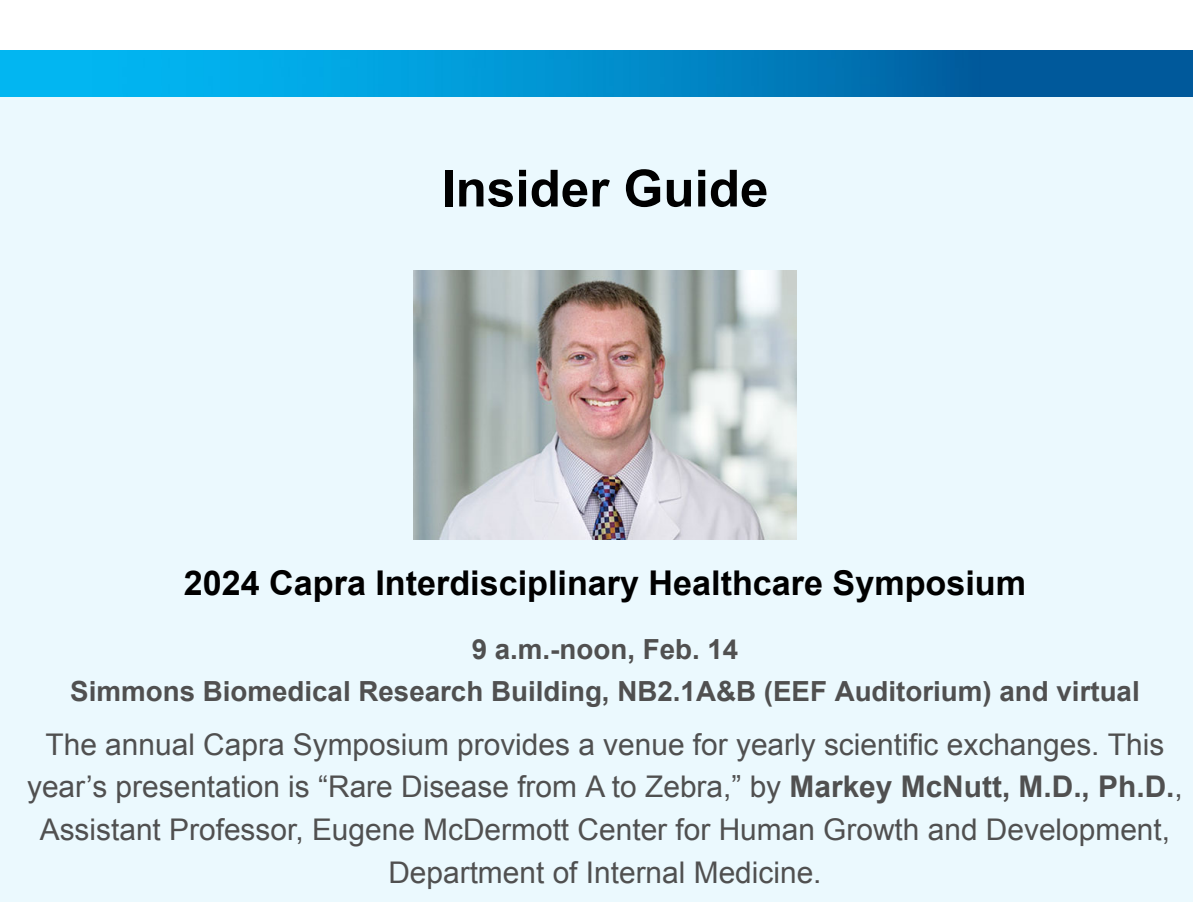
Levine legacy lives on in new autophagy findings

Josephine Thinwa, M.D., Ph.D., was a postdoctoral fellow in the lab of the late, legendary UT Southwestern microbiologist **Beth Levine, M.D.**, when she started investigating the genetic link between a rare neurodevelopment disorder and virus-related autophagy.

In November 2023, Dr. Thinwa was the lead author of a study published in the *Journal of Clinical Investigation* that revealed a gene called *CDKL5*. It protects cells during infection, and if it's knocked out, cell death increases.

She is now looking into how *CDKL5* influences brain development and helps cells in the brain resist viral infection. "This project was birthed in (Dr. Levine's) lab," said Dr. Thinwa, who was mentored by Dr. Levine, a pioneer in the field of autophagy. "We had the main fundamentals before Beth died (from breast cancer in 2020), and then I worked on the mechanisms.

"I'm very proud of carrying on the work of Beth Levine in the same lab space."
 Read more about Dr. Thinwa's research on [Center Times Plus](#).



MSHI program: Late application deadline

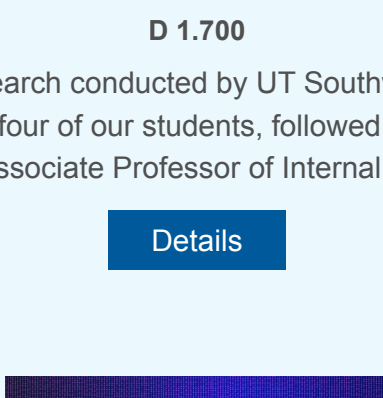
Did you miss the priority deadline to submit your application for the [Master of Science in Health Informatics](#) (MSHI) program? There's still time! You can submit your application to join the Fall 2024 cohort through **March 1**.

MSHI, in the School of Health Professions, is a graduate program focusing on the intersection of health care and information technology. Graduates are equipped for careers that improve individual health, health care delivery, public health, and biomedical research. The in-person program offers full- and part-time formats, with evening classes to accommodate the busy schedules of working professionals.

You can apply using the button below or email the [MSHI team](#) for more information.

[Apply now](#)

Insider Guide



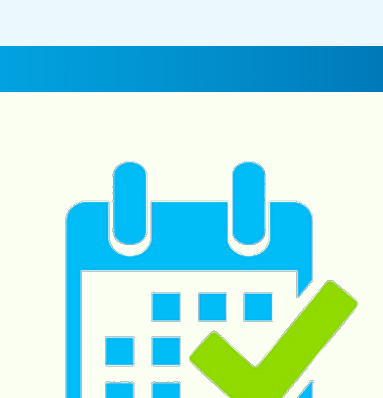
2024 Capra Interdisciplinary Healthcare Symposium

9 a.m.-noon, Feb. 14

Simmons Biomedical Research Building, NB2.1A&B (EEF Auditorium) and virtual

The annual Capra Symposium provides a venue for yearly scientific exchanges. This year's presentation is "Rare Disease from A to Zebra," by **Markey McNutt, M.D., Ph.D.**, Assistant Professor, Eugene McDermott Center for Human Growth and Development, Department of Internal Medicine.

[Registration](#)



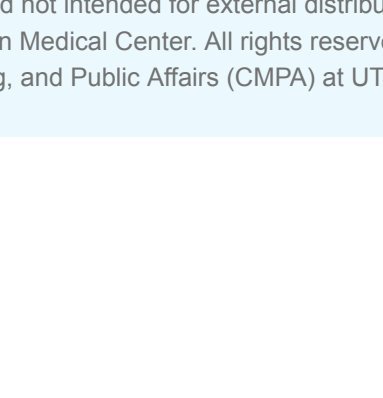
62nd annual Medical Student Research Forum

3-6 p.m., Jan. 30

Eugene McDermott Plaza and Lecture Halls (D), D 1.700

This event celebrates research conducted by UT Southwestern Medical Students. Hear oral presentations by four of our students, followed by keynote speaker **Denise Marciano, M.D., Ph.D.**, Associate Professor of Internal Medicine and Cell Biology.

[Details](#)



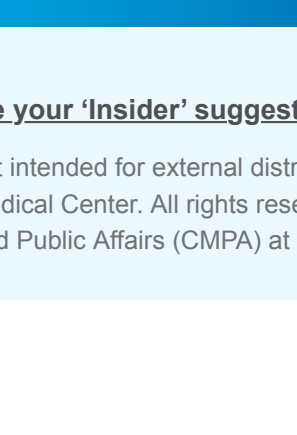
Computational and Theoretical Neuroscience Symposium

8:30 a.m.-3 p.m., Jan. 31

T. Boone Pickens Auditorium (NG3.112)

Join leaders in computational and theoretical neuroscience to explore cutting-edge trends in the field. Engage with national and emerging experts, including **Wenhao Zhang, Ph.D.**, Assistant Professor of Bioinformatics at UTSW, for insightful discussions on the latest advancements.

[Information](#)



UTSW Events Calendar

Looking for your daily dose of happenings?
 The UTSW Events Calendar is updated every day.

[Click to view upcoming or trending events](#)

Share your 'Insider' suggestions

This is an internal email and not intended for external distribution. Please do not forward.
 Copyright 2024 UT Southwestern Medical Center. All rights reserved. UTSW Insider is a publication of Communications, Marketing, and Public Affairs (CMPA) at UT Southwestern Medical Center.