

Starting University Clinical Careers Efficiently, Scholarly, and Successfully

Developing an Academic Career

Alyssa H. Hasty, Ph.D.

**Vice Provost and Sr. Associate Dean for
Faculty Affairs and Career Development,
Professor of Internal Medicine**

Office of the President



Daniel Podolsky, M.D.
*President of
UT Southwestern
Medical Center*



Holly Crawford, MBA
*Executive
Vice President for
Business Affairs*



Jonathan Efron, M.D.
*Executive
Vice President for
Health Systems Affairs*



Marc Nivet, Ed.D., MBA
*Executive
Vice President for
Institutional Advancement*

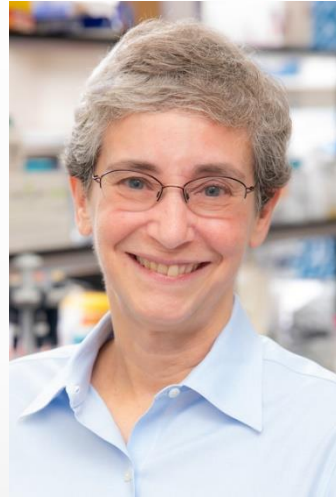


W. P. Andrew Lee, M.D.
*Executive Vice President
for Academic Affairs,
Provost, and Dean*

Office of the Provost



W. P. Andrew Lee, M.D.
*Executive Vice President
for Academic Affairs,
Provost, and Dean*



Joan Conaway, Ph.D.
*Vice Provost & Dean
of Basic Research*



Eric Peterson, M.D.
*Vice Provost & Senior
Associate Dean for
Clinical Research*



Sherry Huang, M.D.
*Vice Provost & Senior
Associate Dean for
Education*



Alyssa Hasty, Ph.D.
*Vice Provost &
Associate Dean for
Faculty Affairs &
Career Development*

Office of Faculty Affairs & Career Development



Jessica Moreland, M.D.
*Associate Dean,
Faculty Development*



Helen Yin, Ph.D.
*Associate Dean,
Women's Careers and
Faculty Development*



Susan Matulevicius, M.D.
*Associate Dean,
Faculty Wellness*

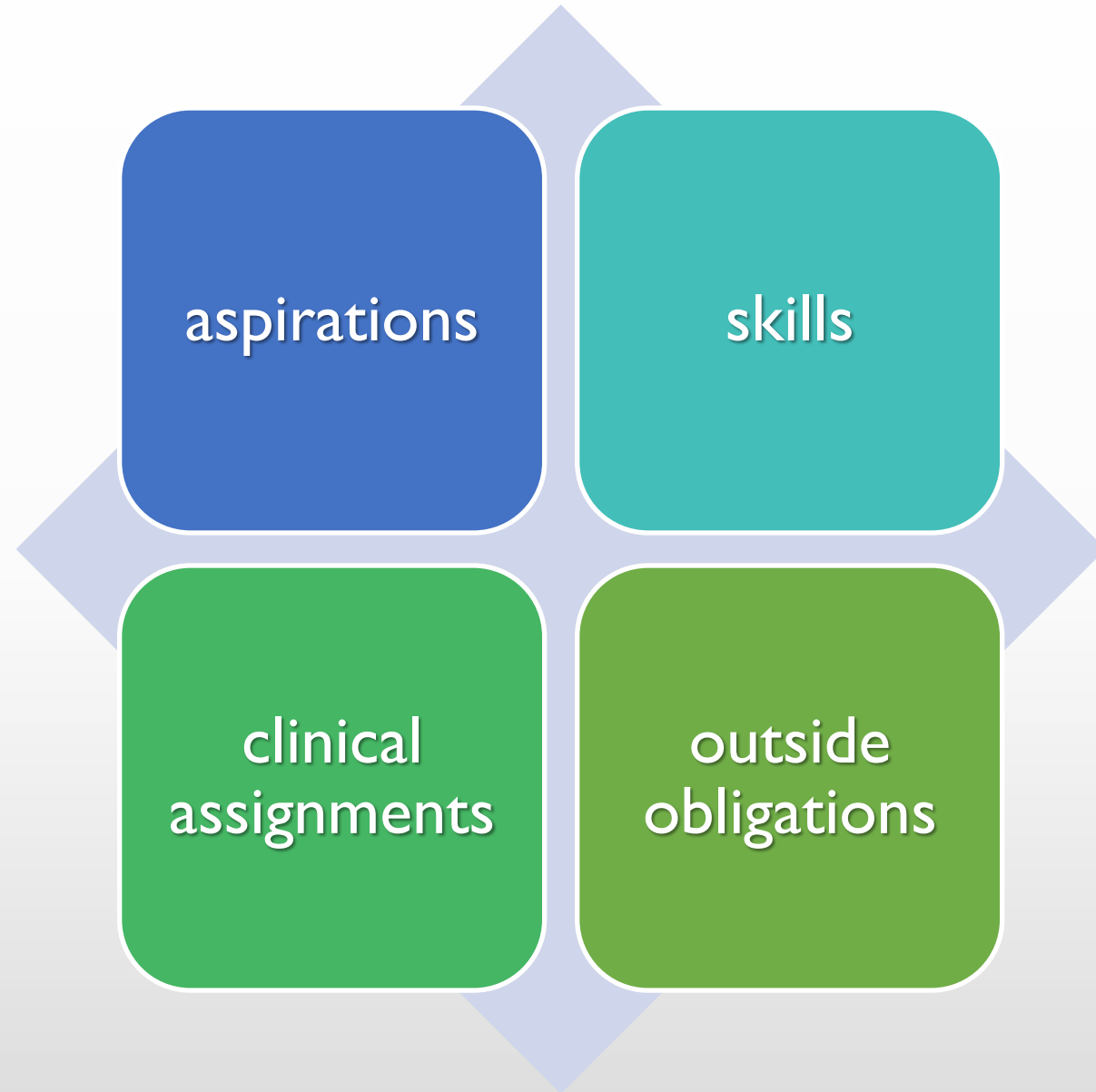


Steve Bloom, M.D.
*Associate Vice Provost,
Faculty Affairs &
Career Development*

Why work at an academic medical center?

- ❖ Workload variety and balance
 - ❖ Education and training
 - ❖ Inpatient and/or outpatient clinical care
 - ❖ Research
- ❖ Paying it forward
- ❖ Leading-edge technology
- ❖ Collaboration with specialists
- ❖ Patient complexity and variety

**If you've seen
one clinical
academician,
you've seen one
clinical
academician**



Research Focus

LIPOPROTEIN METABOLISM AND
ATHEROSCLEROSIS

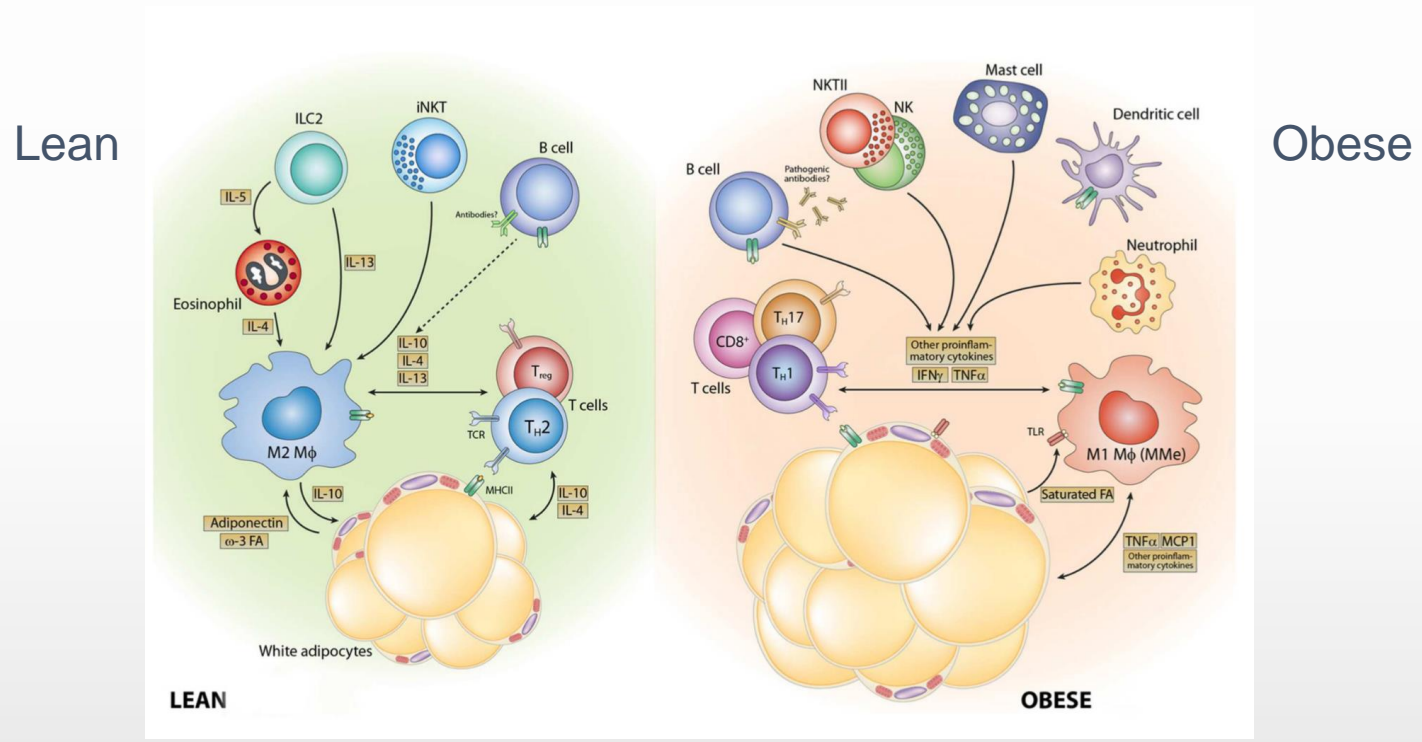


OBESITY AND CARDIOVASCULAR
DISEASE



OBESITY AND ADIPOSE TISSUE
INFLAMMATION

Immunometabolism



Finding your scholarly niche - research

Clinical translational research

Clinical trialist (site PI, co-PI, Key Personnel, etc.)

Data science

Implementation and Community Science

Quality improvement

Health equity

Technology development and implementation

Finding your scholarly niche - education

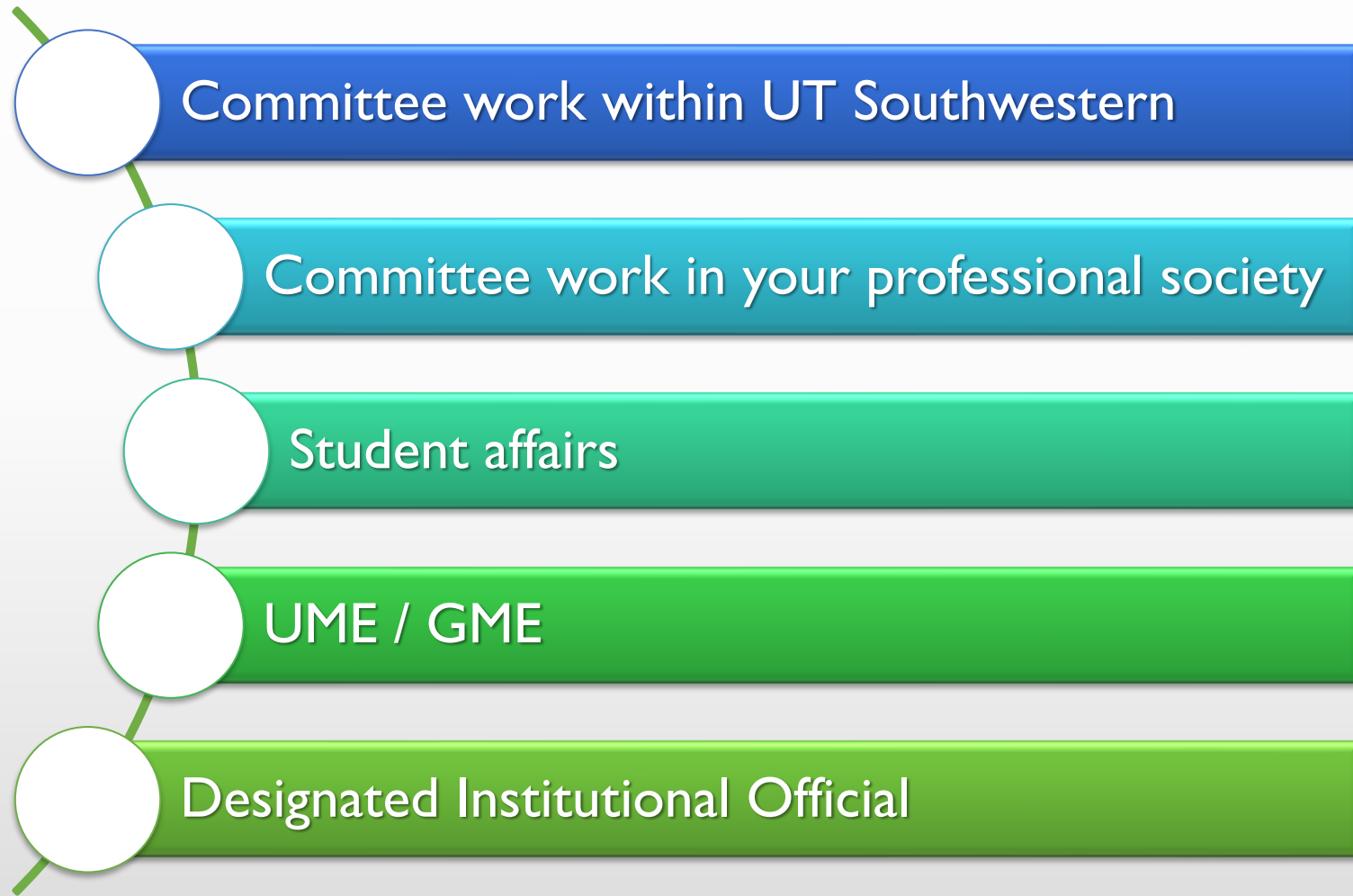
❖ UME

- ❖ Program director developing new programs
- ❖ Course development
- ❖ Medical student research mentor – summer or year long

❖ GME

- ❖ Innovations in health science education
- ❖ Training Resident Doctors as Innovators in Science (TARDIS)
- ❖ Southwestern Academy of Teachers (SWAT) funding opportunities

Finding your citizenship niche



Final advice

- ❖ Find a good mentor
- ❖ Develop a strong network
- ❖ Be intentional about taking time to think about where your passions lie
 - ❖ Where can you thrive?
 - ❖ What doesn't feel like work?
 - ❖ Be as specific as possible
- ❖ Develop a long-term plan after sampling different areas
- ❖ Learn about your leaders and your environment
- ❖ Utilize institutional resources (CTSA, Office of Clinical Research, department, etc.)
- ❖ Try to carve out time each week to work on your scholarly activities
- ❖ YOU are responsible for your career

Starting University Clinical Careers Efficiently, Scholarly, and Successfully Questions?



Alyssa H. Hasty, Ph.D.
Vice Provost and Sr. Associate Dean,
Faculty Affairs & Career Development,
Professor, Internal Medicine
Alyssa.Hasty@UTSouthwestern.edu