

# UT Southwestern Medical Center

## Pharmacy Residency Preceptors

*PGY1 Pharmacy Residency*

*PGY2 Critical Care Pharmacy Residency*

*PGY1/PGY2 Health System Pharmacy Administration & Leadership (HSPAL) Pharmacy Residency*

*PGY2 Investigational Drugs & Research (IDR) Pharmacy Residency*



**Pearl Abraham, PharmD, BCPS, BCOP**

Clinical Pharmacy Specialist – Transplant & Cellular Therapies

PharmD, The University of Texas at Austin

PGY1, Texas Health Dallas & Texas Tech University Health Sciences Center

**Preceptor For:**

PGY1 – Outpatient oncology/transplant & cellular therapies

**Research Interests:**

Multiple myeloma/bispecific antibodies, Car-T



**Joshua Blackwell, PharmD, MS, BCSCP**

Clinical Pharmacy Manager – Ambulatory Services

PGY2 HSPAL Residency Program Coordinator

PharmD, Ohio Northern University

MS Pharmacy Leadership & Administration, University of Houston

PGY1/PGY2 HSPAL, Baylor St. Luke's Medical Center (The Houston Program)

**Preceptor For:**

PGY1 & PGY2 HSPAL – Ambulatory Services Management

**Research Interests:**

Clinical ambulatory services; infusion services (home infusion and hospital at home services); population health management; specialty and outpatient pharmacy services



**Thanh (Tam) Bui, PharmD, BCOP**

Clinical Staff Pharmacist – Investigational Drug Services

**Preceptor For:**

PGY2 IDR – Investigational Drug Services

**Research Interests:**

Immunotherapy, breast cancer, leukemia, supportive care

---



**Whitney Chaney, PharmD, BCPS, BCCCP**

Clinical Pharmacy Specialist – Surgical ICU & Nutrition Support Team

PharmD, The University of North Carolina – Eshelman School of Pharmacy

PGY1, Parkland Health & Hospital System, Dallas, TX

PGY2 Critical Care, University of Maryland Medical Center, Baltimore, MD

**Preceptor For:**

PGY1 – Surgical Critical Care

PGY2 Critical Care – Surgical ICU, Surgical ICU 2, Nutrition Support

**Research Interests:**

Shock, nutrition

---



**Brian Cohen, PharmD, MS, FACHE, FASHP, FTSHP**

Assistant Vice President – Division of Pharmacy Services

PharmD, The University of Texas at Austin

MS Pharmacy Practice, The University of Kansas Health System

PGY1/PGY2 HSPAL, The University of Kansas Health System

**Preceptor For:**

PGY2 HSPAL – Executive Pharmacy Leadership and Finance/Budgeting II

**Research Interests:**

Pharmacy administration research topics



**Stefanie Conley, PharmD, BCOP**

Clinical Pharmacy Manager – Oncology Investigational Drug Service  
PGY2 IDR Pharmacy Residency Coordinator  
BS Pharmacy, Purdue University  
PharmD, Purdue University  
PGY2 Oncology, University of Pittsburgh

**Preceptor For:**

PGY1 & PGY2 IDR – Oncology Investigational Drug Service  
PGY2 HSPAL - Investigational Drugs & Research Management

**Research Interests:**

Oncology, Malignant Hematology, Immunotherapy, Car-T, Bispecific antibodies,  
Clinical Trial Pharmacy Operations

---



**Todd Connor, PharmD, MS**

Director of Pharmacy – Acute Care  
PGY2 HSPAL Pharmacy Residency Program Director  
PharmD, University of Houston  
MS Health System Pharmacy Administration, Ohio State University  
PGY1/PGY2 HSPAL, Riverside Methodist Hospital, Columbus, Ohio

**Preceptor For:**

PGY1 – Inpatient Operations I  
PGY2 HSPAL – Inpatient Operations II/Medication Use Systems; Community  
Hospital Operations

**Research Interests:** Employee engagement/satisfaction, operational efficiency,  
leadership development, regulatory requirements, professional organization  
involvement

---



**Noelle Cordova, PharmD, BCACP**

Clinical Pharmacy Specialist – Digestive Disease Clinic  
PharmD, University of Rhode Island  
PGY1, Michael E. DeBakey VA Medical Center, Houston, TX  
PGY2 Ambulatory Care, Rhode Island Hospital & University of Rhode Island

**Preceptor For:**

PGY1 – Ambulatory Care

**Research Interests:**

Inflammatory bowel disease, specialty pharmacy



**Katy Cox, PharmD, BCPS-AQ Cardiology, BCCP, BCCCP**  
Clinical Pharmacy Specialist – Cardiology/Cardiac Intensive Care Unit  
PharmD, Texas Tech University Health Sciences Center  
PGY1/PGY2 Cardiology, University of Oklahoma

**Preceptor For:**  
PGY1 – General Cardiology, Advanced Cardiology  
PGY2 Critical Care – Cardiac ICU, Cardiac and Cardiovascular ICU 2

**Research Interests:**  
Advanced heart failure, arrhythmias, mechanical circulatory support, and acute coronary syndrome

---



**Erin Davidson, PharmD, MS, BCACP**  
Clinical Pharmacy Specialist – Ambulatory Services, Division of Cardiology  
PharmD, The University of Tennessee Health Science Center  
PGY1 Community-Based, Baylor Scott & White, Dallas, TX

**Preceptor For:**  
PGY1 – Ambulatory Care

**Research Interests:**  
Cardiometabolic disorders, increasing pharmacy practice and presence in ambulatory spaces in addition to expanding scope of practice services

---

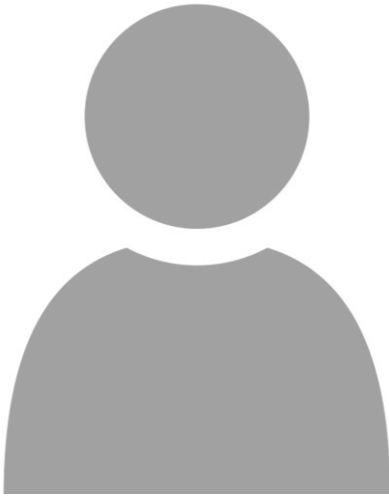


**Cameron Durlacher, PharmD, MS, BCPS**  
Clinical Staff Pharmacist  
PharmD, University of South Florida  
PGY1/PGY2/MS Health System Pharmacy Administration, Ohio Health

**Preceptor For:**  
PGY2 Critical Care – Cardiovascular ICU Staffing  
PGY2 HSPAL – Advanced Clinical Practice (Staffing)

**Research Interests:**  
Anticoagulation, infectious disease, medication-use utilization, medication safety, operational excellence





**Jessica Francois Whitt, PharmD, BCTXP**

Clinical Pharmacy Specialist – Solid Organ Transplant  
PharmD, Texas Southern University  
PGY1, University Medical Center of El Paso  
PGY2 Solid Organ Transplant, Jackson Memorial Hospital, Miami, FL

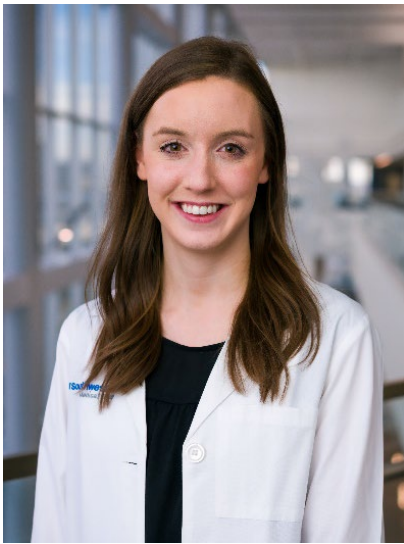
**Preceptor For:**

PGY1 – Solid Organ Transplant

**Research Interests:**

Solid Organ Transplant

---



**Kailee Gaines, PharmD, BCOP**

Clinical Pharmacy Specialist – Transplant & Cellular Therapies, Outpatient Cancer  
PharmD, The University of Texas at Austin  
PGY1, Ascension Seton, Austin, TX  
PGY2 Oncology, Texas Tech University Health Sciences Center & UTSW

**Preceptor For:**

PGY1 & PGY2 IDR – Outpatient Bone Marrow Transplant

**Research Interests:**

Lymphoma, Car-T, and bispecific antibodies

---



**Anthony Giazzon, PharmD, MS, BCSCP**

Pharmacy Operations Coordinator - Acute Care (Sterile Compounding)  
PharmD, Purdue University  
MS Pharmacy Leadership & Administration, University of Houston  
PGY1/PGY2 HSPAL, Michael E. DeBakey VA Medical Center (The Houston Program)

**Preceptor For:**

PGY1 – Professional Development Longitudinal Rotation  
PGY2 HSPAL – Human Resource Management & Leadership Longitudinal Rotation

**Research Interests:**

Pharmacy operations, sterile compounding, workforce optimization



**Esther Golnabi, PharmD, BCIDP**

Clinical Pharmacy Specialist - Infectious Diseases  
PharmD, Texas Tech University Health Sciences Center  
PGY1, UT Southwestern Medical Center  
PGY2 Infectious Diseases, The John Hopkins Hospital, Baltimore, MD

**Preceptor For:**

PGY1 – General Infectious Diseases Consult

**Research Interests:**

Optimization of duration of therapy, early transition to oral antimicrobials, outpatient parenteral antimicrobial therapy (OPAT), ambulatory antimicrobial stewardship

---



**Sonia Gonzales, PharmD, BCOP**

Clinical Pharmacy Coordinator – Inpatient/Non-Oncology Investigational Drugs  
PharmD, Texas Tech University Health Sciences Center

**Preceptor For:**

PGY2 IDR – Investigation Drug Service Rotations

**Research Interests:**

Investigational drug pharmacy

---



**Wenting (Wendi) Guo, PharmD, BCPS, BCCCP**

Clinical Staff Pharmacist – MICU/SICU  
PharmD, the University of Texas at Austin  
PGY1, Baylor St. Luke's Medical Center, Houston, TX

**Preceptor For:**

PGY2 Critical Care – Medical and Surgical ICU Staffing

**Research Interests:**

Critical care, anticoagulation, ID, medication safety



**Mark Herrington, PharmD, BCIDP**

Clinical Pharmacy Specialist – Infectious Diseases  
PharmD, University of Health Sciences and Pharmacy in St. Louis  
PGY1, SSM Health DePaul Hospital, St. Louis, MO  
PGY2 Infectious Diseases, the University of Texas MD Anderson Cancer Center

**Preceptor For:**

PGY1 and PGY2 Critical Care – Transplant Infectious Diseases

**Research Interests:**

Infections in the immunocompromised, cytomegalovirus, gram-negative resistance

---



**Katherine Hill, PharmD, BCOP**

Clinical Pharmacy Specialist – Oncology  
PharmD, Presbyterian College School of Pharmacy, Clinton, SC  
PGY1, Oschsner LSU Health Shreveport, Shreveport, LA  
PGY2 Oncology, Texas Tech University Health Sciences Center & UTSW

**Preceptor For:**

PGY1 – Outpatient Oncology

**Research Interests:**

Genitourinary cancers, neuro-oncology, immunotherapy

---



**Christine Hong, PharmD, MBA, BCOP**

Director of Pharmacy – Oncology & Investigational Drug Services  
PharmD, Rutgers University  
MBA, University of Connecticut  
PGY1/PGY2 HSPAL, Yale New Haven Hospital – Saint Raphael Campus & Cardinal Health Pharmacy Solutions

**Preceptor For:**

PGY2 HSPAL – Hematology/Oncology Operations  
PGY2 IDR - Oncology Administration, Medication Safety, Leadership & Management, Investigational Drug Services

**Research Interests:**

Formulary management, optimization, oncology stewardship, pharmacist and pharmacy technician practice advancement, pharmacy operation improvement, pharmacy automation/technology integration, business planning



**Lindsay Jacobs, PharmD, MPH, BCCCP, BCEMP**

Clinical Pharmacy Specialist – Emergency Medicine  
PGY2 Critical Care Pharmacy Residency Program Coordinator  
PharmD, University of South Carolina  
PGY1, Ascension St. Vincent Hospital, Indianapolis, IN  
PGY2 Emergency Medicine, Inova Fairfax Hospital, Falls Church, VA

**Preceptor For:**

PGY1, PGY2 HSPAL – Emergency Medicine  
PGY2 Critical Care – Emergency Medicine, Toxicology, Longitudinal Medical Emergencies

**Research Interests:**

Resuscitation, sepsis, stroke, and medication safety

---



**Jerry James, PharmD, MS**

Director of Pharmacy – Pharmacy Administration  
PharmD, The University of Texas at Austin  
MS Pharmacy Practice, The University of Kansas Health System  
PGY1/PGY2 HSPAL, The University of Kansas Health System

**Preceptor For:**

PGY2 HSPAL – Strategic Planning Longitudinal Rotation

**Research Interests:**

Pharmacy Strategic/Business Planning, Pharmacy Operations, Clinical Pharmacy, Pharmacy Facility Management, USP Standards

---



**Meagan Johns, PharmD, MBA, BCPS, BCCCP, BCNSP**

Clinical Pharmacy Manager – Acute Care  
PGY1 Pharmacy Residency Program Coordinator  
PharmD, University of Florida

**Preceptor For:**

PGY1 – Clinical Administration, Pharmacy Administration/Medication Safety  
PGY2 – Longitudinal Practice Management  
PGY2 HSPAL- Clinical Services Management

**Research Interests:**

Clinical Pharmacy Practice/Quality, Infectious Diseases, Nutrition Support



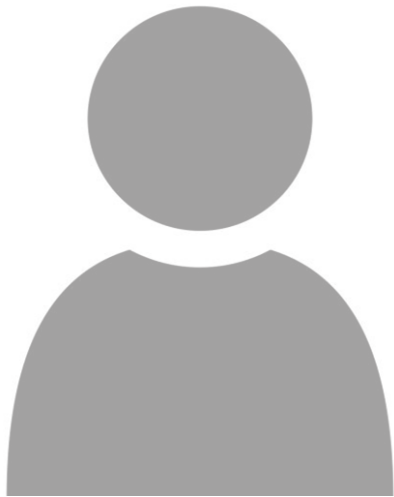


**Claire Klimko, PharmD, BCPS**  
Clinical Staff Pharmacist – ICU  
PharmD, the University of Texas at Austin  
PGY1, UT Southwestern Medical Center

**Preceptor For:**  
PGY2 Critical Care – Medical and Surgical ICU Staffing

**Research Interests:**  
Critical Care

---

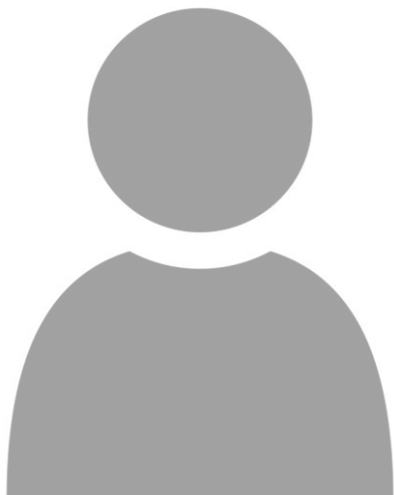


**Elizabeth Kim, PharmD, BCPS**  
Operations Manager – Acute Care  
PharmD, Massachusetts College of Pharmacy and Health Sciences

**Preceptor For:**  
PGY1 & HSPAL – Pharmacy Informatics and Data Management

**Research Interests:**  
Process improvement

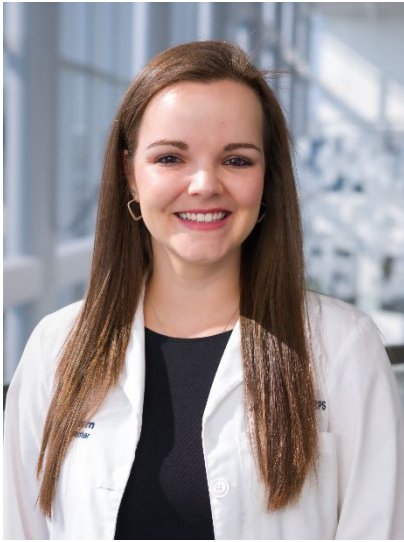
---



**Iris Lee, PharmD, BCPS**  
Clinical Pharmacy Coordinator  
PharmD, the University of Texas at Austin  
PGY1, Texas Health Dallas & Texas Tech University Health Sciences Center

**Preceptor For:**  
PGY1 - Advanced Staffing, Staffing Longitudinal Rotation, Medical Emergencies  
Longitudinal Rotation

**Research Interests:**  
Process improvement, anticoagulation, bleeding disorders



**Jordan Light, PharmD, BCPS**

Clinical Staff Pharmacist  
PharmD, Texas Tech University Health Sciences Center  
PGY1, Saint Alphonsus Regional Medical, Boise, ID  
PGY2 Geriatrics, Texas Tech University Health Sciences Center

**Preceptor For:**

PGY1 – Internal Medicine, Geriatrics

**Research Interests:**

Geriatrics, internal medicine, pain management, critical care

---



**Chephra McKee, PharmD, BCPPS**

Clinical Pharmacy Specialist – Neonatal Intensive Care Unit  
BS Pharmaceutical Sciences, University of Mississippi  
PharmD, University of Mississippi  
PGY1, Children’s Hospital of the King’s Daughters, Norfolk, VA

**Preceptor For:**

PGY1 – Neonatal Intensive Care Elective Rotation, Mentoring, Professional Development

**Research Interests:**

Neonatal Nutrition; Childhood Immunizations

---



**Marguerite Monogue, PharmD, BCIDP**

Clinical Pharmacy Specialist – Infectious Diseases  
PharmD, the University of Texas at Austin  
PGY1, Parkland Health & Hospital System, Dallas, TX  
PGY2/PGY3 Infectious Diseases Fellowship, Center for Anti-infective Research & Development at Hartford Hospital, Hartford, CT

**Preceptor For:**

PGY1 – Infectious Diseases & Antimicrobial Stewardship  
PGY2 Critical Care – Infectious Diseases

**Research Interests:**

Anti-infective pharmacokinetics and pharmacodynamics, rapid diagnostics, microbiology, multi-drug resistant gram-negative organisms, beta-lactamase inhibitors, novel antimicrobials



**Van Ngo, PharmD, BCPS, BCTXP**

Clinical Pharmacy Specialist – Solid Organ Transplant  
PharmD, University of Houston  
PGY1, Texas Health Harris Methodist Hospital Forth Worth

**Preceptor For:**

PGY1 & PGY2 Critical Care – Solid Organ Transplant

**Research Interests:**

Dosing of immunosuppressant in obese solid organ transplant patients,  
pharmacoeconomic impacts of immunosuppressant on graft survival of patients

---



**Oanh Nguyen, PharmD, MBA, BCPS, BCCCP**

Director of Pharmacy – Quality, Safety, Education & Non-Oncology IDS  
PGY1 Pharmacy Residency Program Director  
PharmD, University of Oklahoma  
PGY1, Cincinnati VA Medical Center, Cincinnati, OH

**Preceptor For:**

PGY1 – Pharmacy Administration/Medication Safety  
PGY2 HSPAL – Quality and Medication Safety

**Research Interests:**

Quality and Medication Safety

---



**Chinyere Nkwocha, PharmD, BCACP**

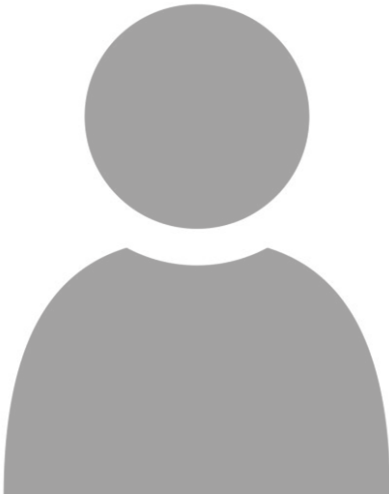
Clinical Pharmacy Specialist, Ambulatory Care  
PharmD, University of Cincinnati  
PGY1 Community-Based, University of Cincinnati  
PGY2 Ambulatory Care, JPS Health, Fort Worth, TX

**Preceptor For:**

PGY1 – Ambulatory Care Longitudinal Rotation

**Research Interests:**

Emerging areas with GLP RA



**Mary Olumesi, PharmD, BCPS, BCCCP**

Clinical Pharmacy Specialist – Solid Organ Transplant  
PGY1, UT Southwestern Medical Center

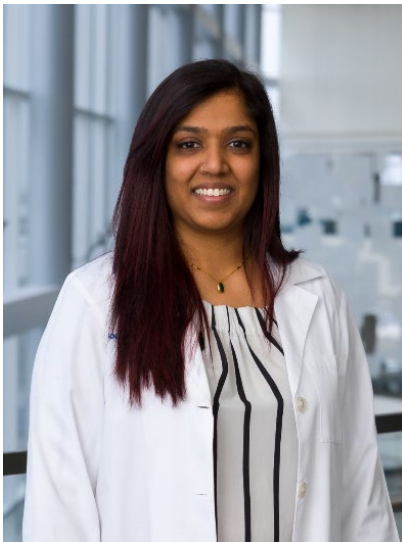
**Preceptor For:**

PGY1 & PGY2 Critical Care – Solid Organ Transplant

**Research Interests:**

Solid Organ Transplant, Infectious Diseases

---



**Bhavyata Parag, PharmD, BCPS**

Clinical Pharmacy Specialist – Internal Medicine  
PharmD, The University of Tennessee Health Science Center  
PGY1, Baptist Memorial Hospital, Memphis, TN  
PGY2 Internal Medicine, University of Louisville

**Preceptor For:**

PGY1 – Internal Medicine, Advanced Internal Medicine

**Research Interests:**

Inpatient Diabetes Management, anticoagulation, nutrition support optimization

---



**Hetalkumari Patel, PharmD, BCOP**

Clinical Pharmacy Manager – Hematology/Oncology  
PharmD, University of Kentucky

**Preceptor For:**

PGY1 & PGY2 IDR – Oncology Administration

**Research Interests:**

Supportive care & outcomes for stem cell transplant, leukemia, lymphoma & multiple myeloma patients





**Jolly Raju, PharmD, CACP**

Clinical Pharmacy Specialist – Anticoagulation (Heart & Lung Transplant Clinic)  
PharmD, Albany College of Pharmacy and Health Sciences  
PGY1, Parkland Health and Hospital System

**Preceptor For:**

PGY1 – Outpatient anticoagulation clinic elective rotation

**Research Interests:**

Anticoagulation, pharmacist impact in outpatient anticoagulation clinics

---



**Kaitlin (Katie) Rascon, PharmD**

Clinical Pharmacy Specialist – Oncology/Solid Tumor  
PharmD, University of Houston  
PGY1, Michael E. DeBakey VA Medical Center, Houston, TX  
PGY2 Oncology, Texas Tech University Health Sciences Center & UTSW

**Preceptor For:**

PGY1 - Inpatient Oncology

**Research Interests:**

Immune checkpoint inhibitor toxicities, TKI pneumonitis & mgmt, patient outcomes following inpatient chemotherapy administration

---



**Michelle Ramos, PharmD, BCPS**

Clinical Pharmacy Coordinator – Transitions of Care  
PharmD, Texas Tech University Health Sciences Center  
PGY1 Pharmacy Practice, St Louis College of Pharmacy & Mercy Hospital  
PGY2 Transitions of Care, University of California – San Diego

**Preceptor For:**

PGY1 – Transitions of Care Elective

**Research Interests:**

Care transitions, medication safety, patient education, process improvement



**Eden Mae Rodriguez, PharmD**

Clinical Pharmacy Specialist – Palliative Care

PharmD, University of Houston

PGY1/PGY2 Pharmacotherapy, Texas Tech University Health Sciences Center

**Preceptor For:**

PGY1 & PGY2 Critical Care – Pain & Palliative Care

**Research Interests:**

Anything related to pain management involving methadone, buprenorphine, and ketamine; medication simplification in the frail patient and advancing the role of the pharmacist in palliative care

---



**Klayton Ryman, PharmD, BCCCP**

Clinical Pharmacy Specialist – Medical ICU

PharmD, Texas A&M University

PGY1, Intermountain Medical Center, Murray, UT

PGY2 Critical Care, The University of Texas MD Anderson Cancer Center

**Preceptor For:**

PGY1 – Critical Care – Medical ICU

PGY2 Critical Care – Medical ICU, Medical ICU 2

**Research Interests:**

Septic shock, fluid stewardship

---



**James Sanders, PhD, PharmD, BCIDP, AAHIVP**

Clinical Pharmacy Specialist – Infectious Diseases & Antimicrobial Stewardship

PharmD, The University of Texas at Austin

PGY1, VA North Texas Health Care System

PGY2 Infectious Diseases, VA North Texas Health Care System

**Preceptor For:**

PGY1 – Infectious Diseases & Antimicrobial Stewardship

PGY2 Critical Care – Infectious Diseases

**Research Interests:**

Antimicrobial stewardship, surgical site infections, HIV pharmacotherapy



**Madeline Scarbrough, PharmD**

Clinical Pharmacy Specialist – Neurosurgical ICU  
PharmD, Texas Tech University Health Sciences Center  
PGY1 & PGY2 Critical Care, UT Southwestern

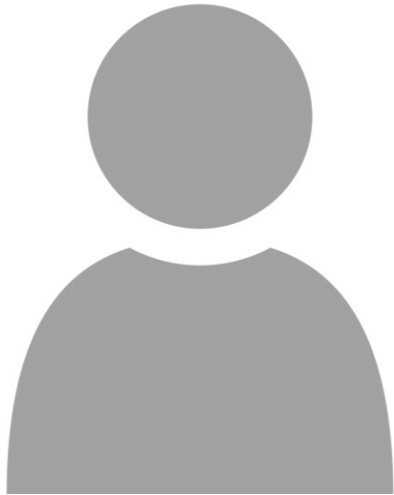
**Preceptor For:**

PGY1 – Neurocritical Care Elective  
PGY2 Critical Care – Neurocritical Care, Neurocritical Care 2

**Research Interests:**

ICH, status epilepticus

---



**Chris Selby, PharmD, BCOP**

Clinical Pharmacy Specialist – Inpatient Medical Oncology  
PharmD, Southern Illinois University – Edwardsville School of Pharmacy  
PGY1, Louisiana State University Health Shreveport  
PGY2 Oncology, University of Colorado – Skaggs School of Pharmacy

**Preceptor For:**

PGY1 – Inpatient Medical Oncology

**Research Interests:**

Immunotherapy, breast cancer, leukemia, supportive care

---



**Lisa Skariah, PharmD, BCPS**

Clinical Pharmacy Specialist – Cardiovascular ICU  
PharmD, The University of Texas at Austin  
PGY1, The University of Texas at Tyler Health Science Center

**Preceptor For:**

PGY1 – CVICU  
PGY2 Critical Care – Cardiovascular ICU, Cardiac and Cardiovascular ICU 2

**Research Interests:**

Anticoagulation, hemostasis, mechanical circulatory support



**Candace Sutton, PharmD, BCPS, BCGP**

Clinical Pharmacy Coordinator – Acute Care Staffing & Acute Care Leadership  
Pharmacy Student Preceptor Coordinator  
PharmD, Southwestern Oklahoma State University  
PGY1, Ascension St. John Medical Center, Tulsa, OK

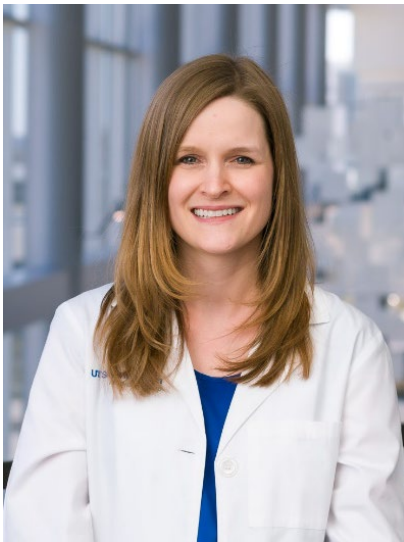
**Preceptor For:**

PGY1 – Orientation, Advanced Staffing, Staffing Longitudinal Rotation, and  
Medical Emergencies Longitudinal Rotation

**Research Interests:**

Inpatient pharmacist workflow implementation, inpatient pharmacy operations

---



**Jennifer Tawwater, PharmD, BCPS, BCCCP**

Clinical Pharmacy Specialist – Medical ICU  
PGY2 Critical Care Pharmacy Residency Program Director  
PharmD, Texas Tech Health Sciences Center  
PGY1/PGY2 Pharmacotherapy, Texas Tech University Health Sciences Center

**Preceptor For:**

PGY1 – Critical Care, Medical ICU  
PGY2 Critical Care – Medical ICU, Medical ICU 2, Critical Care Precepting

**Research Interests:**

Septic shock, antimicrobial stewardship, DKA, cirrhosis, teaching & precepting

---



**Belen Tilahun, PharmD, BCPS, BCCCP**

Pharmacy Operations Coordinator – Quality & Safety  
PharmD, The University of Texas at Austin  
PGY1, Texas Health Dallas & Texas Tech University Health Sciences Center

**Preceptor For:**

PGY2 Critical Care – Practice Management (Medication Safety)

**Research Interests:**

Quality and safety projects





**Raelene Trudeau, PharmD, BCPS**

Clinical Pharmacy Specialist – Solid Organ Transplant  
PharmD, Texas Tech University Health Sciences Center  
PGY1/PGY2 Pharmacotherapy, Barnes-Jewish Hospital, St. Louis, MO

**Preceptor For:**

PGY1 & PGY2 Critical Care – Solid Organ Transplant

**Research Interests:**

Transplant

---



**Linda Uchal, PharmD, BCPS, BCCCP**

Clinical Staff Pharmacist – Critical Care  
BS Pharmacy Foundations, Duquesne University  
PharmD, The University of Texas at Austin with UT Health Science Center San Antonio

**Preceptor For:**

PGY2 Critical Care – Medical and Surgical ICU Staffing

**Research Interests:**

Provider Wellness, Bioethics in Clinical Education, Moral Injury/Moral Distress

---



**Valerie Vuylsteke, PharmD, BCACP**

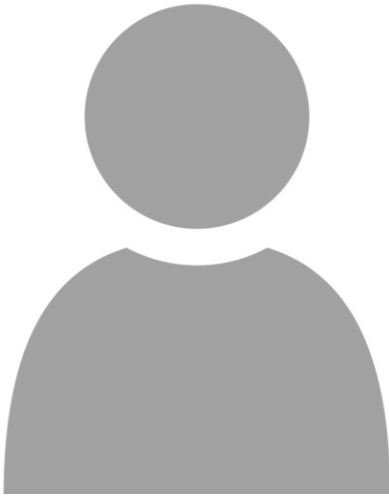
Clinical Pharmacist – Transitions of Care  
PharmD, University of Illinois Chicago  
PGY1, Allegheny General Hospital, Pittsburgh, PA  
PGY2 Ambulatory Care w/ emphasis on Academia, University of Tennessee Health Sciences Center, Memphis, Tennessee

**Preceptor For:**

PGY1 – Transitions of Care Elective Rotation

**Research Interests:**

Readmission reduction outcomes with utilization of TOC pharmacy initiatives



**Alicia Yn, PharmD, BCOP**

Clinical Pharmacy Specialist – Hematology, Bone Marrow Transplant, and Cellular Therapies

PharmD, University of Health Sciences and Pharmacy in St. Louis  
PGY1/PGY2, Barnes-Jewish Hospital, St. Louis, MO

**Preceptor For:**

PGY1 – Hematology, Bone Marrow Transplant, and Cellular Therapies

PGY2 Critical Care – Bone Marrow Transplant

**Research Interests:**

Hematology, bone marrow transplant, and cellular therapies

---