

medicine minute

Tuesday, December 31, 2024

kudos

INFLUENCERS

Liao to Investigate Health Equity and Social Risk Adjustment



Joshua Liao, M.D., M.Sc., a Professor of Internal Medicine and Chief of the William T. and Gay F. Solomon Division of General Internal Medicine, has received a grant from The Donaghue Foundation to work on health equity by addressing social risk adjustment (how to account for non-clinical factors that affect patient outcomes).

The project seeks to fill critical knowledge gaps in value-based care and health equity with evidence about incorporating area-level social risk measures in large, nationwide programs such as those rolled out by the Centers for Medicare and Medicaid Services (CMS). Via rigorous evaluation and partnership with

CMS, Dr. Liao and colleagues will generate insight about social risk adjustment that can help policymakers allocate resources based on the extent of health needs across neighborhoods.

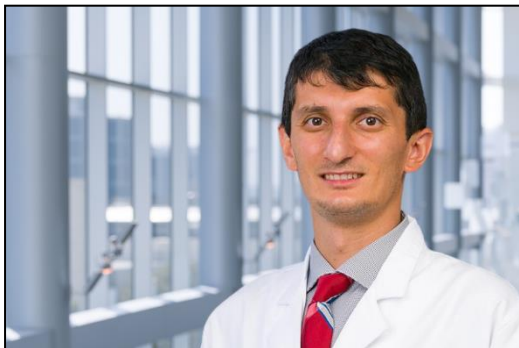
This project aligns with other work that Dr. Liao leads through the Program on Policy Evaluation & Learning (PROPEL), as well as his work advising the U.S. Congress on the Medicare Program through the Medicare Payment Advisory Commission (MedPAC), the Secretary of the U.S. Department of Health and Human Services through the Physician-Focused Payment Model Technical Advisory Committee (PTAC), and other regional and national work as a leading payment and delivery policy expert.

Dr. Liao holds the Walter Family Distinguished Chair in Internal Medicine in Honor of Albert D. Roberts, M.D.

research roundup

PUBLICATIONS

Bone Marrow Interest Group Members Publish Studies



Taha Bat, M.D., an Assistant Professor in the Division of Hematology and Oncology, and members of the Bone Marrow Failure Interest Group recently published two articles that demonstrate the group's commitment to promoting excellence in hematology research and education.

In a [Letter to the Editor](#) published in the *International Journal of Laboratory Hematology*, lead author **Michelle Zhu, B.S.A.**, a third-year medical student, described a study that leveraged the absolute immature platelet number (AIPN)—an easily accessible lab value—to distinguish between aplastic anemia

and immune thrombocytopenia, with validation through machine learning.

Julia Shi, B.A., was first author on a review article, "[The Treatment Landscape of Paroxysmal Nocturnal Hemoglobinuria in 2025](#)," published in *Therapeutic Advances in Hematology*.

Dr. Bat was senior author on both publications. He leads the Bone Marrow Failure Interest Group.

education and training

CONFERENCE REPORT

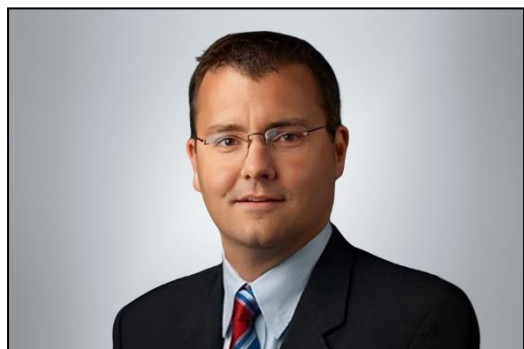
Medical Students Present at ASH Annual Meeting

Münevver Duran, B.A., Erika Ren, B.Sc., and Michelle Zhu, B.S.A., medical student members of the Bone Marrow Failure Interest Group, and **Benjamin Kroger, B.S.**, an MSTP student and Perot Family Scholar in the [Stephen Chung Lab](#), received Abstract Achievement Awards from the American Society of Hematology (ASH) and presented their work at the organization's annual meeting in San Diego.

alumni news

RECOGNITION

Leukemia and Lymphoma Society Honors Oncologist Brian Berryman



Brian Berryman, M.D., a former Assistant Professor in the Division of Hematology and Oncology who currently serves as Director for Outreach and Clinics for the Blood and Marrow Transplantation Services at Baylor University Medical Center, has been honored by the Leukemia and Lymphoma Society with the Lynda Adleta Heart of Gold Award.

Dr. Berryman holds a bachelor's degree in psychology from Washington & Lee University in Lexington, Virginia. He received his medical degree and completed internal medicine residency training at UT Southwestern, where he also obtained fellowship training in hematology and oncology.

Dr. Berryman is a member of the American Medical Association, American Society of Clinical Oncology, American Society of Hematology and the American Society of Blood and Marrow Transplantation.



Internal Medicine News Portal
Click for more Department news and updates

in case you missed it

FROM THE NEWSROOM

Beutler, Shi Identify Cancer-Suppressing Genetic Mutation



Bruce Beutler, M.D., Director of the Center for the Genetics of Host Defense and Professor of Immunology and Internal Medicine, and **Hexin Shi, Ph.D.**, an Assistant Professor in the Center for the Genetics of Host Defense and Immunology, have discovered a genetic mutation that can slow the growth of melanoma and possibly other cancers by leveraging the immune system. Their study, published in the [Journal of Experimental Medicine](#), suggests that this discovery could pave the way for new treatments that enhance the effectiveness of current cancer immunotherapies.

Dr. Beutler was awarded the 2011 [Nobel Prize](#) in Physiology or Medicine for his discovery of an important family of receptors that allow mammals to quickly sense infection and trigger an inflammatory response.

Dr. Beutler holds the Raymond and Ellen Willie Distinguished Chair in Cancer Research, in Honor of Laverne and Raymond Willie, Sr. and is a Regental Professor.

To learn more about Dr. Beutler's research, visit the [Beutler Lab site](#).

News and Digital Media Featuring Internal Medicine Colleagues

- [CRI Scientists Link Hematopoietic Cell Transplant Deaths to Beta-blocker Use](#) (via UTSW Newsroom, with **Stephen Chung, M.D.**)

need to know

HOLIDAYS

Clinics, Academic Offices, Labs Closed on Jan. 1



Wednesday, Jan. 1, is a [designated holiday](#) for UTSW faculty, employees, and trainees, in observance of New Year's Day.

All UTSW clinics, central administration, academic offices, and research labs will be closed. Hospitals will be fully operational with appropriate staff in support areas.

There will be no Internal Medicine Grand Rounds on Friday, Jan. 3.

If you have questions about the holiday policy, contact Human Resources at 214-648-0821.

this week

INTERNAL MEDICINE RESEARCH CONFERENCE

Ostrosky-Frid to Discuss Gene Therapy for Kidney Disease on Jan. 3



Mauricio Ostrosky-Frid, M.D., Ph.D., a PSTP Fellow in the Division of Nephrology, will present the [Internal Medicine Research Conference](#) on **Friday, Jan. 3, at noon in D1.502**. His topic: "Gene Therapy for ADPKD: Enhancing Polycystin-1 Expression by Targeting Pkd1 3'UTR."

Originally from Mexico, Dr. Ostrosky-Frid earned his medical degree and his doctorate from National Autonomous University of Mexico in Mexico City. He completed internal medicine residency training at UT Southwestern before beginning

fellowship training in nephrology through the Physician Scientist Training Program (PSTP).

Noteworthy Lectures & Conferences

- **Thursday, Jan. 2, Noon:** [Nephrology Journal Club](#) with **Dr. Kelley Harris** (Nephrology) – “Flowing with Semaglutide: The Effects of Semaglutide on Chronic Kidney Disease in Patients with Type 2 Diabetes”
- **Monday, Jan. 6, Noon:** [Special Nephrology Lecture](#) with **Dr. Gabriel Loeb** (University of California San Francisco) – “Identifying Kidney Disease Mechanisms from Human Genetics”

save the date

LEADERSHIP LECTURE SERIES

Agusala, Albin to Speak About Lifestyle Medicine on Jan. 15



The Leadership Lecture Series continues **Wednesday, Jan. 15, at noon** with a presentation **Bethany Agusala, M.D.**, an Assistant Professor in the Division of General Internal Medicine and Director of the William T. and Gay F. Solomon General Internal Medicine Clinic, and **Jaclyn Albin, M.D.**, an Associate Professor in the Division of Combined Internal Medicine and Pediatrics, and Director of the Culinary Medicine Program. Their topic: “Lifestyle Medicine for Healthcare Workers.”

All lectures are virtual, informal, and brown bag. Faculty, APPs, administrators, and trainees are welcome to attend.

To register in advance for the virtual event, click [here](#).

EDUCATION & TRAINING

Tenth Annual Seldin Symposium Set for March 28



Abstracts for the 10th annual **Donald W. Seldin Research Symposium** can be submitted now through **Saturday, Feb. 1, 2025**, using the online submission form. Submission guidelines can be found [here](#).

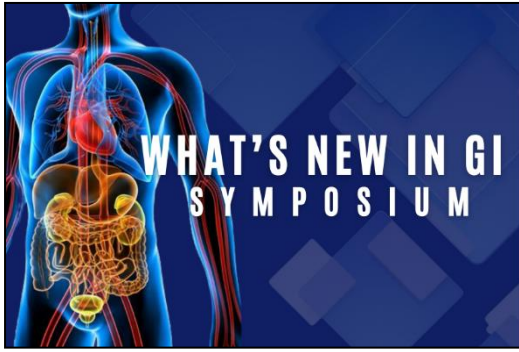
The symposium is scheduled for **Friday, March 28, 2025**. It will feature poster presentations ranging from basic science and clinical investigations to quality improvement and medical education, a keynote address by **David Altshuler, M.D., Ph.D.**, executive vice president and chief scientific officer of Vertex Pharmaceuticals, and the Seldin-Smith Physician Scientist Lecture by **Benjamin Izar, M.D., Ph.D.**, an Assistant

Professor of Medicine in the Division of Hematology and Oncology at Columbia Vagelos College of Physicians and Surgeons.

For more details about the Seldin Symposium, click [here](#).

CONTINUING MEDICAL EDUCATION

Annual GI Symposium Scheduled for Feb. 22



Faculty members from the Division of Digestive and Liver Diseases will present their annual “What’s New in GI” symposium on **Saturday, Feb. 22, at the Westin Galleria Dallas.**

The one-day, in-person CME course, directed by **David Fudman, M.D., Neha Patel, M.D., and Tarek Sawas, M.D.**, is designed for gastroenterologists, GI surgeons, internal medicine physicians, family practice providers, nurse practitioners, physician assistants, and other healthcare providers with an interest in gastroenterology and hepatology. Attendees will be provided with practical information that can

be applied in their clinical practice. Discussions will include the latest updates on recognizing symptoms and using current data to establish diagnoses and formulate appropriate treatment plans for the management of gastrointestinal diseases.

For more information, click [here](#).



Internal Medicine Events Calendar

[Click to view additional events](#)

Look for the next *Medicine Minute* on **Tuesday, Jan. 7, 2025.**
Share feedback and news items with us at IMNews@UTSouthwestern.edu

Copyright 2024 UT Southwestern Medical Center. All rights reserved.
Medicine Minute is a publication of the Department of Internal Medicine at UT Southwestern Medical Center.

