

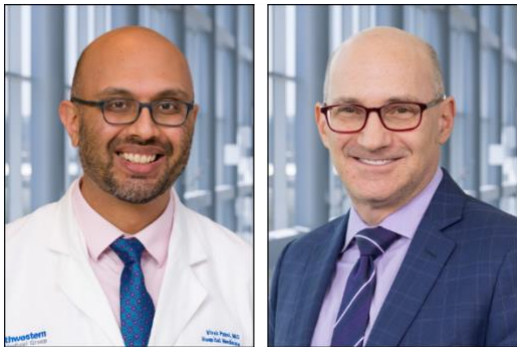
# medicine minute

Tuesday, October 15, 2024

## announcements

### LEADERSHIP TRANSITIONS

## New Hospital Medicine Chief and Interim Chief are Named



**Vivek Patel, M.D.** (left), a Clinical Associate Professor in the Division of Hospital Medicine, has been appointed Chief of Hospital Medicine at Parkland Memorial Hospital, and **Craig Glazer, M.D., M.S.P.H., M.S.-M.A.S.**, a Professor in the Division of Pulmonary and Critical Care Medicine, has been appointed Interim Chief of Hospital Medicine at Clements University Hospital and Texas Health Frisco.

Dr. Patel has held progressive leadership responsibilities since joining the UT Southwestern faculty in 2010. Since 2015, he has been the Medical Director of Hospital Medicine at Parkland, and in 2018, he was appointed Chair of the Parkland

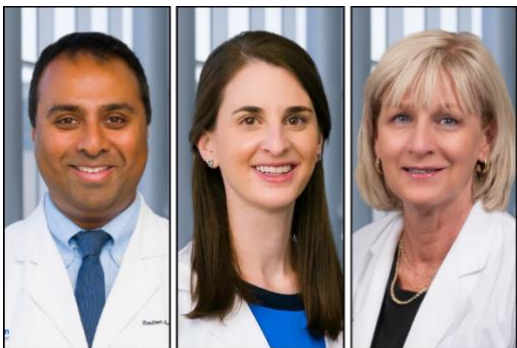
Peer Oversight Committee. Dr. Patel succeeds **Eugene Chu, M.D.**, who served as Chief from 2017 before departing for the University of Iowa.

Dr. Glazer joined the UT Southwestern faculty in 2002. Since 2020, he has served as Associate Vice President and Chief Medical Officer of University Hospitals. He succeeds **Jonathan Weisler, M.D.**, who served as Interim Chief for 12 years before stepping down from the position in September.

## kudos

### HONORS

## Faculty Members Receive SWAT's Outstanding Educator Awards



Three faculty members have received Outstanding Educator Awards from the Southwestern Academy of Teachers (SWAT):

- **Reuben Arasaratnam, M.D., M.P.H.**, an Associate Professor in the Division of Infectious Diseases and Geographic Medicine, received the award for exceptional GME Teaching Faculty (non-Program Director). Originally from Ascot, England, Dr. Arasaratnam holds a bachelor's degree in physiology from the University of Cambridge. He received his medical degree from the University of Oxford Medical School, where he graduated with honors, and obtained internal medicine residency training at Oxford University Hospitals. He

subsequently moved to the United States to pursue further internal medicine training at the University of North Carolina in Chapel Hill and then completed advanced training through a fellowship program in infectious diseases at Baylor College of Medicine in Houston. He also obtained a master's degree in public

health from the Harvard T.H. Chan School of Public Health in Boston. Dr. Arasaratnam joined the UT Southwestern faculty in 2017.

• **Natalie Bavli, M.D.**, an Assistant Professor in the Division of Hematology and Oncology, was honored for excellence in teaching Biomedical Sciences. Dr. Bavli earned her medical degree at Tufts University School of Medicine and completed residency training at Beth Israel Deaconess Medical Center in Boston. She then received advanced training through a fellowship in hematology at UT Southwestern. Dr. Bavli joined the UT Southwestern faculty in 2021.

• **Gail Peterson, M.D.**, a Professor in the Division of Cardiology, Associate Chief of Cardiology Education, and Program Director for the Cardiovascular Disease Fellowship, was recognized for outstanding GME Program Director. Dr. Peterson earned her medical degree at the University of Michigan Medical School. She completed internal medicine residency training at UT Southwestern, where she served as Chief Resident, and then obtained advanced training a cardiology fellowship at Duke University Medical Center. Dr. Peterson joined the UT Southwestern faculty in 2001.

*The awards will be presented at the upcoming SWAT Excellence in Education Celebration to be held in the A.W. Harris Faculty Club on Monday, Nov. 18 from 5-6:30 p.m.*

#### CONFERENCES

### Pandey Presents Study Findings at HFSA Plenary Sessions



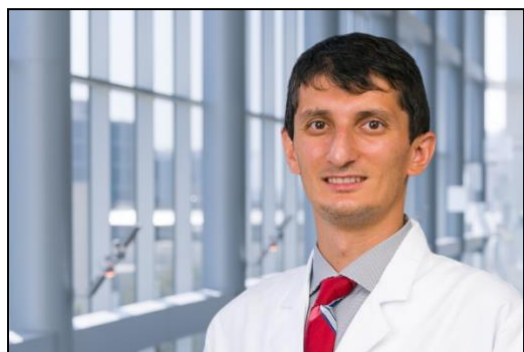
**Ambarish Pandey, M.D., M.S.C.S.**, an Associate Professor in the Division of Cardiology and Geriatric Medicine, presented two late-breaking clinical research findings during plenary sessions at the 2024 Heart Failure Society of America Annual Scientific Meeting last month:

- Efficacy of Semaglutide in Patients with Obesity and HFpEF According to Frailty Status: A Pooled Analysis from the STEP-HFpEF Program
- A Novel Controlled Metabolic Accelerator for the Treatment of Obesity-related Heart Failure with Preserved Ejection

Fraction: The HuMAIN-HFpEF Trial

#### CAREER DEVELOPMENT

### Bone Marrow Failure Group Advances Hematology



UT Southwestern's Bone Marrow Failure Cases (BMFcases) trainee interest group, which includes more than 30 students, has had four abstracts accepted for presentation at international conferences.

Three abstracts were accepted by the American Society of Hematology Annual Meeting, all authored by third-year medical students **Michelle Zhu** and **Munevver Duran** and second-year medical students **Erika Ken** and **Katayoun Khalilian**. Additionally, third-year medical students **Tanya Reyna** and **Catherine Agarwal** had an abstract accepted for the CHEST Conference.

"A big shout-out to the group for its continuous efforts and commitment to promoting excellence in hematology research and education," says **Taha Bat, M.D.**, an Assistant Professor in the Division of Hematology and Oncology and leader of the group. "These accomplishments highlight the dedication of our students and the strength of our program in nurturing the next generation of leaders in classical hematology."

## research roundup

### HYPOTHALAMIC RESEARCH

## Zigman Lab Publishes Findings on Reducing Cancer-Related Cachexia



Cancer cachexia, a condition commonly seen in patients with advanced cancer, is marked by a decrease in food intake and significant weight loss due to the reduction of muscle mass and often fat tissue. A [study published in \*Endocrinology\*](#) by **Salil Varshney, Ph.D.**, in the Zigman Lab, has demonstrated for the first time that reducing levels of the hormone LEAP2, which has been shown to reduce food intake and body weight, lessens the severity of cancer-related cachexia.

“Altogether, data suggest that less of the hormone LEAP2 with or without more of the hormone ghrelin results in a natural protective response against what would otherwise worsen loss of muscle mass and/or fat mass and lower appetite in the setting of cancer cachexia,” says **Jeffrey Zigman, M.D., Ph.D.**, a Professor in the Division of Endocrinology and the study’s senior author. “This research project links together actions of the related hormones LEAP2 and ghrelin, which act on the hypothalamus and other regions of the brain to affect food intake, body weight, adiposity, and muscle mass and function.”

*Dr. Zigman holds the Kent and Jodi Foster Distinguished Chair in Endocrinology, in Honor of Daniel Foster, M.D.; the Mr. and Mrs. Bruce G. Brookshire Professorship in Medicine; and the Diana and Richard C. Strauss Professorship in Biomedical Research.*

To learn more about Dr. Zigman’s research, visit the [Zigman Lab site](#).

### RESEARCH RESOURCES

## CMRU Core Lab Now Available



The [Cardiometabolic Research Unit \(CMRU\)](#), under the direction of **Thomas J. Wang, M.D.**, Professor and Chair of Internal Medicine, and **Ambarish Pandey, M.D., M.S.C.S.**, an Associate Professor in the Division of Cardiology, has established a Core Lab to provide comprehensive services to researchers throughout UT Southwestern.

“The CMRU seeks to promote collaboration among researchers, trialists, and industry partners to support innovation in multi-omics clinical research and advance the understanding and treatment of cardiometabolic diseases,” says **Michael Mitakidis, M.D.**, an Instructor in the Division of

Cardiology and Director of the CMRU Core Lab. “Our expert clinical research team offers advanced phenotype capabilities, big data analysis, a multi-specimen biobank, and a niche analytical wet lab.”

*Dr. Wang holds the Donald W. Seldin Distinguished Chair in Internal Medicine.*

To learn more, visit the [CMRU Core Lab site](#).

## education and training

### RESIDENT WELLNESS

## Serpa Receives Intealth Well-being Grant



**Frans Serpa, M.D.**, a PGY-1 Resident, has received a 2024 [Intealth](#) Well-being Grant to fund development of a mentorship program to support International Medical Graduates (IMGs).

“We received nearly 70 proposals, making the selection process highly competitive, says Tracy Wallowicz, Chief of Staff to the Senior Vice President of External Relations for Intealth, a private nonprofit. Dr. Serpa’s project stood out for its “exceptional quality, thoughtfulness, and potential to positively impact the well-being of foreign national physicians,” she adds.

Dr. Serpa’s project is a mentorship program aimed at helping IMGs transition smoothly into the U.S. healthcare system. The program offers peer support and organizes events centered around networking, guidance, and mental health. These activities are designed to provide IMGs with the essential resources and community support they need to succeed.

“Receiving this competitive grant is a significant milestone for UT Southwestern and our Internal Medicine Residency program,” Dr. Serpa says. “On behalf of the entire team, I want to say thanks for believing in us and supporting our initiatives and enthusiasm. I couldn’t ask for a better program!”



**Internal Medicine News Portal**  
Click for more Department news and updates

## in case you missed it

### Articles and Videos Featuring Internal Medicine Colleagues

- [Zigman Honored with Obesity Society’s Founders Award](#) (via *CenterTimes Plus*, with **Jeffrey Zigman, M.D., Ph.D.**)
- [What is Detox? Here’s Why You May Want to Think Twice Before Trying One](#) (via *USA Today* with **Josephine Ni, M.D.**)

## events

HEALTHCARE OBSERVANCES

### International Infection Prevention Week Observed Oct. 13-19



International Infection Prevention Week was established in 1986 by the Association for Professionals in Infection Control and Epidemiology to shine a light on the importance of preventing healthcare-associated infections (HAIs) in healthcare facilities and to remind healthcare professionals and the public of the role everyone plays in infection prevention.

The CDC estimates that one out of every 31 hospitalized patients will get an HAI, some of which will be minor and easily treatable, while others will be life-threatening. In most cases, HAIs are preventable through the implementation of proven, evidence-based infection prevention protocols and procedures.

To learn more about “Moving the Needle” on infection prevention, click [here](#).

## Noteworthy Lectures & Conferences

- **Tuesday, Oct. 15, 6 p.m.:** [Family & Community Medicine Grand Rounds](#) with **Dr. Felona Gunawan** (Endocrinology) – “Atypical Diabetes”
- **Wednesday, Oct. 16, 8 a.m.:** [Geriatrics Grand Rounds](#) with **Dr. Elena Volpi** (UT Health San Antonio) – “Translating Basic Findings on Sarcopenia into Treatments for Functional Recovery in Older Adults”
- **Thursday, Oct. 17, Noon:** [Renal Grand Rounds](#) with **Dr. Eugene Lin** (University of Southern California) – “Financial Conflicts of Interest in Nephrology and Dialysis Quality”
- **Thursday, Oct. 17, Noon:** [Pathology Seminar Series](#) with **Dr. Yasmeen Butt** (Mayo Clinic) – “An Approachable Approach to Diffuse Parenchymal Lung Disease”



## Internal Medicine Events Calendar

[Click to view additional events](#)

## save the date

LEADERSHIP LECTURE SERIES

### Bajaj, Reed to Speak About Quality Improvement on Nov. 12



The Leadership Lecture Series continues **Tuesday, Nov. 12, at noon** with a presentation **Puneet Bajaj, M.D., M.P.H.**, an Associate Professor in the Division of Rheumatic Diseases and Internal Medicine Quality Officer, and **Gary Reed, M.D., M.S.**, a Professor in the William T. and Gay F. Solomon Division of General Internal Medicine. Their topic: Quality Improvement.

All lectures are virtual, informal, and brown bag. Faculty, APPs, administrators, and trainees are welcome to attend.

To join the virtual event, click [here](#).

## one last thing

STATE EMPLOYEE CHARITABLE CAMPAIGN

### Make a Difference by Donating to the SECC



More than 225 UTSW employees have contributed \$160,000 to the 2024 State Employee Charitable Campaign (SECC). However, with just a few weeks left before the Oct. 31 deadline, only a third of the \$300,000 goal has been reached.

If you haven't donated yet and are able to make even a small contribution, you are encouraged to help broaden UTSW's impact.

Visit [Campus Update](#) to see which departments are leading the charge in participation and fundraising – and be inspired to join them. Employees can donate to any of [several hundred](#)

[state-vetted charities](#), including Southwestern Medical Foundation and Moncrief Cancer Institute, through payroll deduction. Additionally, just by participating in the campaign, [you could win one of 50 prizes](#),

including FC Dallas and Mavs gear, State Fair of Texas tickets, LED speakers, charcuterie board sets, gift baskets, and more. Donating is easy and convenient, and it can be done entirely within PeopleSoft.

## correction

*An announcement in the Oct. 8 edition incorrectly identified Jake Lichterman's promotion to Instructor in the Office of Instruction Administration. Dr. Lichterman is an Instructor in the Division of Hematology and Oncology.*

---

When we learn of a mistake, we acknowledge it with a correction. If you spot an error, please let us know at [IMNews@UTSouthwestern.edu](mailto:IMNews@UTSouthwestern.edu).

Look for the next *Medicine Minute* on **Tuesday, Oct. 22, 2024**.  
Share feedback and news items with us at [IMNews@UTSouthwestern.edu](mailto:IMNews@UTSouthwestern.edu)

Copyright 2024 UT Southwestern Medical Center. All rights reserved.  
*Medicine Minute* is a publication of the Department of Internal Medicine at UT Southwestern Medical Center.

