

# medicine minute

Tuesday, September 17, 2024

## kudos

CLINICAL CARE

### Five Faculty Members Honored as Leaders in Clinical Excellence

Clinical faculty members from Internal Medicine have been recognized in five of seven award categories during a year in which there were more than 200 nominations.

The awards will be presented during a ceremony on **Thursday, Nov. 14 at 4:30 p.m.** in the Tom and Lula Gooch Auditorium, followed by a reception on the plaza.



**Miguel Vazquez, M.D.**, a Professor in the Division of Nephrology, will receive the Patricia and William L. Watson Jr., M.D. Award for excellence in Clinical Care, UT Southwestern's highest honor in clinical care. The award recognizes excellence in patient care, leadership in advancing clinical innovation, and a quality of work that has had a profound impact on patients, students, trainees, and colleagues.

Dr. Vazquez currently serves as Clinical Chief of the Nephrology Division at UT Southwestern and Chief of Nephrology at Parkland Memorial Hospital.

Dr. Vazquez joined the UT Southwestern faculty in 1992.



**Jonathan Dowell, M.D.**, a Professor in the Division of Hematology and Oncology, will receive the Institutional Service Award, which honors clinical faculty who consistently share time and expertise in service to internal committees, task forces, and other institutional activities that make a significant impact on the care delivered to UT Southwestern patients.

Dr. Dowell currently serves as Chief of Hematology and Oncology at the Dallas VA Medical Center.

Dr. Dowell joined the UT Southwestern faculty in 1996.



**Ildiko Lingvay, M.D., M.P.H., M.S.C.S.**, a Professor in the Division of Endocrinology, will receive the Mentoring Award, presented to clinicians who demonstrate exceptional commitment and effectiveness as a mentor to healthcare providers.

Dr. Lingvay is a clinical investigator in the field of diabetes, obesity, and associated metabolic complications. She leads an active clinical research program in the Division of Endocrinology.

Dr. Lingvay joined the UT Southwestern faculty in 2005.



**Bonnie Prokesch, M.D.**, a Professor in the Division of Infectious Diseases and Geographic Medicine, will receive the Patient and Family Recognition Award, which honors clinical faculty whose dedication to compassionate, respectful delivery of care has garnered the highest degree of patient trust and satisfaction.

Dr. Prokesch specializes in general infectious diseases, HIV and AIDS, pre-exposure prophylaxis (PrEP), recurrent urinary tract infections (UTIs), and postoperative infections.

Dr. Prokesch joined the UT Southwestern faculty in 2016.



**Fiona Strasserking, M.D.**, an Assistant Professor in the Division of Cardiology, will receive the President's Award for Diversity and Humanism in Clinical Care, presented to clinical faculty who exemplify the humanistic spirit of patient-centered medicine, both through clinical excellence and in outstanding compassion in the delivery of care.

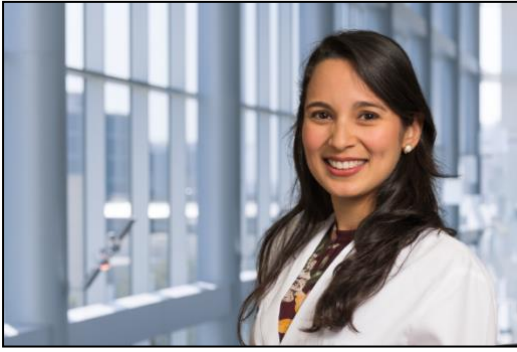
Dr. Strasserking is a veteran of the U.S. Navy, where she served as a hospital corpsman. She also serves as a Visiting Professor in the Department of Internal Medicine at the University of Zambia.

Dr. Strasserking joined the UT Southwestern faculty in 2022.

## research roundup

GLOBAL HEALTH

### **Delgado Ramos Receives Grant to Start Breast Cancer Registry in Ecuador**



**Glenda Delgado Ramos, M.D.**, an Assistant Professor in the Division of Hematology and Oncology, has received a \$10,000 Global Health Seed Grant from UT Southwestern to develop a national breast cancer registry in Ecuador in collaboration with the Ecuadorian Society of Oncology.

“Ecuador is a low- to middle-income country where breast cancer is the leading type of cancer among women and the third leading cause of cancer-related deaths,” Dr. Delgado Ramos says. “Of primary concern is the projected increase in breast cancer mortality of about 30 percent by 2030, which is disproportionately higher compared with other neighboring

countries. The precise reason behind this inordinate anticipated increase in mortality is currently unknown due to the limited existing data available, so this collaboration will help establish a registry to further investigate and understand the reasons behind this.”

Originally from Ecuador, Dr. Delgado Ramos earned her medical degree with honors at the Universidad Católica de Santiago de Guayaquil. She completed a residency in internal medicine at the University of Tennessee Health Science Center in Memphis and gained advanced training in hematology and oncology through a fellowship at Loyola University Medical Center in Chicago, where she served as Chief Fellow.

Dr. Delgado Ramos joined the UT Southwestern faculty in 2022.

#### PUBLICATIONS

### Rhodes Examines Telehealth in Palliative Care for Patients with Lung Cancer



**Ramona Rhodes, M.D.**, an Associate Professor in the Division of Geriatric Medicine, and colleagues investigated whether early palliative care delivered via telehealth had an equivalent effect on quality of life in patients with advanced lung cancer. Their findings, published in the [\*Journal of the American Medical Association\*](#), underscored the considerable potential for improving access to this evidence-based care model through telehealth delivery.

The randomized, multisite, comparative effectiveness trial included 1,250 patients and 548 caregivers from 22 cancer centers throughout the U.S.

*Editor's Note: Sherone (Rahni) Williams, a Research Study Coordinator in the Division of Geriatric Medicine, provided integral support.*

#### GRANTS

### Crandall Receives \$2.2M to Study Consequences of Burn Injuries



**Craig Crandall, Ph.D.**, a Professor in the Division of Cardiology, has received a \$2.2 million MIRA (Maximizing Investigators' Research Award) grant to study the cardiovascular and thermoregulatory consequences of severe burn injuries in human burn survivors. The National Institute of General Medical Sciences provides MIRA grants to support particularly accomplished investigators.

“The primary goals of this research are to provide information to burn survivors and their caregivers that could improve their quality of life,” Dr. Crandall says, “and to provide empirical data

directed at reducing otherwise heightened mortality and morbidity risk in this under-served and under-researched population.”

*Dr. Crandall serves as Director of the [Thermal and Vascular Physiology Laboratory](#) in The Institute for Exercise and Environmental Medicine.*



**Internal Medicine News Portal**  
Click for more Department news and updates

## in case you missed it

### Articles and Videos Featuring Internal Medicine Colleagues

- [Updated COVID 19 Vaccines: What You Need to Know](#) (via *MedBlog*, with **James “Brad” Cutrell, M.D.**)
- [Specialized Care for Young Adults with Colorectal Cancer: What You Need to Know](#) (via *MedBlog*, with **Nilesh Verma, M.D.**)
- [A Powerhouse of Obesity Research – Then and Now](#) (via UTSW Newsroom, with **Michael Brown, M.D., Joseph Goldstein, M.D., Jay Horton, M.D., Jeffrey Zigman, M.D., Ph.D., Helen Hobbs, M.D., Scott Grundy, M.D., Ph.D., Ildiko Lingvay, M.D., Kevin Williams, Ph.D., Philipp Scherer, Ph.D., Joel Elmquist, D.V.M., Ph.D., Joyce Repa, Ph.D., and Rodney Infante, M.D., Ph.D.**)

## need to know

ENGAGEMENT

### Survey to Examine Clinical Workforce Culture

**S** Safety  
**C** Communication  
**O** Operational Risk  
**R** Resilience/Burnout  
**E** Engagement

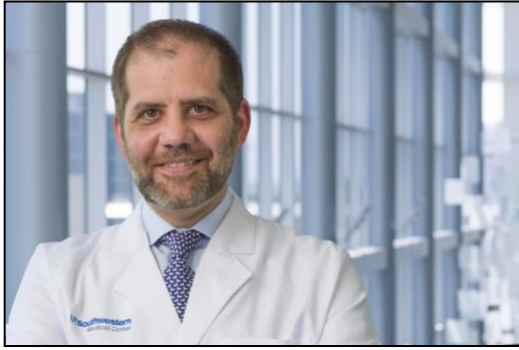
The SCORE Survey is open now through Sunday, Oct. 13 to examine five areas of the clinical workforce: Safety, Communication, Operational Risks, Resilience, and Engagement Levels.

**Helen King, M.D.**, an Associate Professor in the Division of Infectious Diseases and Geographic Medicine, and **Susan Matulevicius, M.D., M.S.C.S.**, a Professor in the Division of Cardiology and Associate Dean of Faculty Wellness, are serving as co-chairs of the faculty SCORE Survey committee.

“We really want to encourage everyone who received the email invitation from Vizient Safe and Reliable Healthcare Surveys to participate,” Dr. Matulevicius says. “More than 20,000 people across the health system, including clinical faculty, residents, fellows, and non-clinical staff, will be asked to provide feedback. This feedback is essential to help us improve and foster a stronger, safer, and more engaged workplace.”

LEGACY

### Fundraising Effort Underway to Honor Aslan Turer



Contributions are being accepted to honor the late **Aslan Turer, M.D., M.H.S., M.B.A.**, who died on May 17, 2024, after a lengthy illness.

The fund will be used to establish an annual lecture series in his name, where alumni and friends can gather to remember his sense of humor, quirky style, and selfless devotion.

“He was the best of us – a phenomenal doctor, award-winning teacher, excellent researcher, clinical leader, and an even better husband, father, and friend,” says **James de Lemos, M.D.**, a Professor of Internal Medicine and Cardiology Division

Chief. “He also made work fun and rewarding for all of us, regardless of our roles, due to his unique sense of humor and endless empathy.”

To donate to the fund and to learn more about Dr. Turer’s life, click [here](#).

## this week

INTERNAL MEDICINE GRAND ROUNDS

### UT Tyler’s Julie Philley to Discuss Public-Private Partnerships on Sept. 20



**Julie Philley, M.D.**, a Professor of Medicine and President of the University of Texas at Tyler, will present the [Internal Medicine Grand Rounds](#) lecture on Friday, Sept. 20, at 8 a.m. in D1.502. Her topic: “Public-Private Partnerships in Academic Medicine: Sense or Cents?”

Originally from Overton, Texas, near Tyler, Dr. Philley holds a bachelor’s degree from Texas Woman’s University. She earned her medical degree from UT Health Houston’s McGovern Medical School and completed internal medicine residency training at Johns Hopkins University/Sinai Hospital. She then received advanced training through a fellowship in

pulmonary and critical care medicine at UT Southwestern.

### Noteworthy Lectures & Conferences

- **Tuesday, Sept. 17, Noon:** [Women in Medicine Speaker Series](#) with **Anne Lai Howard** (Office of Legal Affairs) and **Dr. Jamie Morgan** (Obstetrics & Gynecology) – “Update in Laws Affecting Women’s Health”
- **Tuesday, Sept. 17, 5:30 p.m.:** [Sickle Cell Awareness Month Webinar](#) with **Drs. Olufunke Martin** and **Tiffany Simms-Waldrip** (Pediatrics)
- **Wednesday, Sept. 18, 8 a.m.:** [Geriatrics Grand Rounds](#) with **Dr. Jessica Voit** (Geriatric Medicine) – “Do You Mind? Mindfulness and Medicine”
- **Wednesday, Sept. 18, Noon:** [Excellence in Immunology Lecture Series](#) with **Dr. Golnaz Vahedi** (University of Pennsylvania) – “Genome Organization in T Lymphocytes”
- **Wednesday, Sept. 18, Noon:** [Women in Medicine Speaker Series](#) with **Drs. Rachel Bonnema** (General Internal Medicine) and **Hetal Patel** (Pulmonary & Critical Care Medicine) – “Academic Contributions and Salary: Is There a Gender Difference?”

- **Thursday, Sept. 19, Noon:** [Renal Grand Rounds](#) with **Dr. Craig Brooks** (Vanderbilt University) – “Promoting Mitochondrial Recovery Prevents Maladaptive Repair and AKI-to-CKD Transition”
- **Thursday, Sept. 19, Noon:** [Women in Medicine Speaker Series](#) with **Dr. Bonnie Bermas** (Rheumatic Diseases) – “Reproductive Health for Internal Medicine Patients”
- **Friday, Sept. 20, 10 a.m.:** [National Postdoc Appreciation Week Research Symposium](#) with **Dr. Scott Lowe** (Memorial Sloan Kettering Cancer Center) – “Dissecting the Benign-to-Malignant Transition”
- **Friday, Sept. 20, 1 p.m.:** [Endocrine Grand Rounds](#) with **Dr. Juan Povedano Selfa** (Endocrinology) – “A Preclinical Platform to Identify and Validate Chemically-tractable Liabilities in a Neuroendocrine Cancer”



## Internal Medicine Events Calendar

[Click to view additional events](#)

### reminders

#### COMMUNITY EVENTS

### Dallas Heart Walk Set for Sept. 21



Join other UT Southwestern teams for the Dallas Heart Walk, an annual event that supports lifesaving cardiovascular research and heightens awareness of heart disease and stroke.

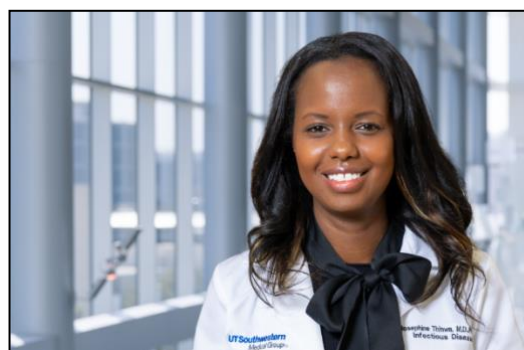
The event begins in Downtown Dallas with an Executive Meet & Greet at 8 a.m. on **Saturday, Sept. 21**, followed by the opening ceremony and UTSW group photo at 8:30 a.m. The 1-mile or 3-mile walk begins at 9 a.m.

To join a UTSW team, click [here](#). To sign up as an individual walker, click [here](#). After registering, fill out the form to receive a custom T-shirt. The last

day to order a T-shirt is Sept. 17. No T-shirts will be available at the event. For more details, click [here](#).

#### INTERNAL MEDICINE RESEARCH CONFERENCE

### Thinwa to Speak About Antiviral Defense on Sept. 23



**Josephine Thinwa, M.D., Ph.D.**, an Assistant Professor in the Division of Infectious Diseases and Geographic Medicine, will present the [Internal Medicine Research Conference](#) at **noon on Monday, Sept 23, in D1.602**. Her topic: “CDKL5: Commanding the Cellular ‘Cleanup Crew’ in Antiviral Defense.”

Conferences are presented every month at noon. Lunch will be provided to those who register in advance.

Dr. Thinwa joined the UT Southwestern faculty in 2021.

To learn more about Dr. Thinwa’s research, visit the [Thinwa Lab site](#).

#### LEADERSHIP LECTURE SERIES

### Smith to Speak About Emotional Intelligence on Oct. 7



The Leadership Lecture Series resumes on **Monday, Oct. 7, at noon** with a presentation by **Lauren Smith, B.B.A.**, Senior Organizational Development Consultant. Her topic: “Emotional Intelligence.”

All lectures are virtual, informal, and brown bag. Faculty, APPs, administrators, and trainees are welcome to attend.

To attend the virtual event, click [here](#). Meeting ID: 921 7162 3737

CONTINUING MEDICAL EDUCATION

## Annual Liver Conference Set for Dec. 7



The Division of Digestive and Liver Diseases will host its 8<sup>th</sup> Annual Update on Liver Diseases on **Saturday, Dec. 7**, at the Renaissance Dallas Hotel.

The annual course, co-directed by **Amit Singal, M.D.**, and **Indira Bhavsar-Burke, M.D.**, will update providers on a diverse range of topics including evaluation of liver tests, non-invasive markers of fibrosis, viral hepatitis, autoimmune liver disease, alcohol and metabolic associated fatty liver disease, cirrhosis, portal hypertension, primary liver cancer and liver transplantation. The conference focuses on recent advances, publications and expert opinions. In addition to didactic

lectures, case presentations are included to make the activity interactive and practical.

UNIVERSITY EVENTS

## New Faculty Research Forum Scheduled for Sept. 24

Recently appointed Assistant Professors representing 11 departments and two schools will present an overview of their work at the [New Faculty Research Forum](#) on **Tuesday, Sept. 24, from 10 a.m. to 3:30 p.m.** in the T. Boone Pickens Conference Center (NG3.112).

To view the complete program, click [here](#). Lunch will be provided for early registrants. To register for the event, click [here](#).

Look for the next *Medicine Minute* on **Tuesday, Sept. 24, 2024**.

Share feedback and news items with us at [IMNews@UTSouthwestern.edu](mailto:IMNews@UTSouthwestern.edu)

Copyright 2024 UT Southwestern Medical Center. All rights reserved.

*Medicine Minute* is a publication of the Department of Internal Medicine at UT Southwestern Medical Center.

