

# medicine minute

Tuesday, June 4, 2024

## announcements

### INFLUENCERS

#### Liao Appointed to Medicare Payment Advisory Commission



**Joshua Liao, M.D., M.Sc.**, a Professor and Chief of the William T. and Gay F. Soloman Division of General Internal Medicine, has been appointed to the Medicare Payment Advisory Commission (MedPAC), a group that advises Congress on payments to providers in Medicare's traditional fee-for-service program and to health plans participating in the Medicare Advantage program.

"MedPAC provides critical information to Congress on the key issues related to the Medicare program," says Gene L. Dodaro, Comptroller General of the United States and head of the U.S. Government Accountability Office. "I am confident [Dr.

Liao] will provide invaluable contributions to MedPAC's important work."

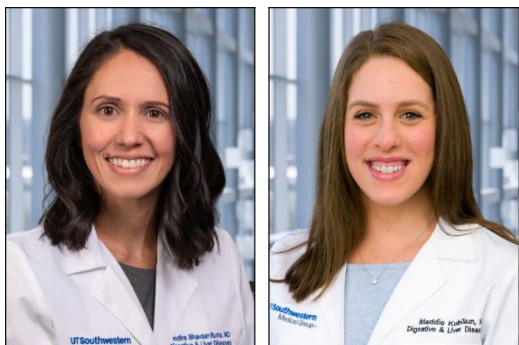
MedPAC was established by Congress in 1997 to analyze access to care, cost, and quality of care, as well as other key issues affecting Medicare.

Dr. Liao serves as Director of the Program on Policy Evaluation and Learning, where his work focuses on improving health care payment and delivery through policy and practice change.

*Dr. Liao holds the Walter Family Distinguished Chair in Internal Medicine in Honor of Albert D. Roberts, M.D.*

### LEADERSHIP TRANSITIONS

#### Kubiliun, Bhavsar-Burke Appointed Residency APDs



**Indira Bhavsar-Burke, M.D., M.H.P.E.**, and **Maddie Kubiliun, M.D., M.P.H.**, have been appointed Associate Program Directors of the Internal Medicine Residency, replacing **Kerry Dunbar, M.D., Ph.D.**, and **Elizabeth Paulk, M.D.**

An Assistant Professor in the Division of Digestive and Liver Diseases, Dr. Bhavsar-Burke (left), holds a medical degree from Marshall University in West Virginia. She completed internal medicine residency training at the University of Virginia, a gastroenterology fellowship at Indiana University, and a transplant hepatology fellowship at Cleveland Clinic.

She also holds a master's degree in health professions education from the University of Michigan.

Dr. Bhavsar-Burke joined the UT Southwestern faculty in 2023.

Dr. Kubiun, also an Assistant Professor in the Division of Digestive and Liver Diseases, holds a bachelor's degree in health science and a master's degree in public health and epidemiology from the University of Florida in Gainesville. She received her medical degree from the University of Miami Miller School of Medicine. She completed internal medicine residency training and a fellowship in gastroenterology and hepatology at UT Southwestern and then went on to complete an additional fellowship in advanced and transplant hepatology at Massachusetts General Hospital in Boston.

Dr. Kubiun joined the UT Southwestern faculty in 2021.

## kudos

### HONORS

#### Uzendu Named a Cary Council 'DocStar'



**Anezi Uzendu, M.D.**, an Assistant Professor in the Division of Cardiology, has received the DocStars Award from the Cary Council, an organization supporting research at UT Southwestern. Honorees are selected by the Council's Steering Committee from faculty nominated by UT Southwestern leadership.

Dr. Uzendu's proposal, "Empowering Dallas School Students to Save Lives Through Civic Partnerships," was selected for funding along with other promising early-stage research projects.

Dr. Uzendu earned his medical degree at the University of Missouri Kansas City School of Medicine. He completed internal medicine residency training at the University of Alabama at Birmingham Hospital and received advanced training through fellowships in cardiovascular medicine at Ohio State University Medical Center and in interventional cardiology at Massachusetts General Hospital's Corrigan Minehan Heart Center. He also completed a research fellowship in cardiovascular outcomes at Saint Luke's Mid America Heart Institute.

Dr. Uzendu joined the UT Southwestern faculty in 2023.

### RECENT JOB CHANGES

#### Staff Members, Faculty Take on New Roles



We congratulate the following faculty and staff members who recently took on new positions within the Department:

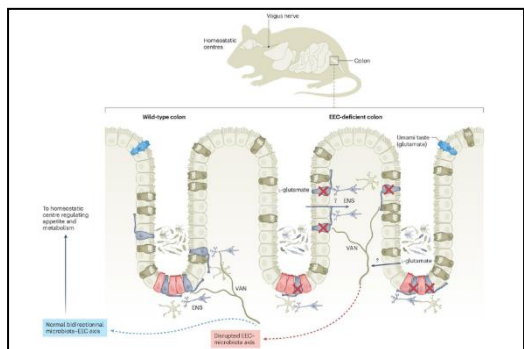
- **Ana Arroyo** – Clinical Research Coordinator II, Nephrology
- **Vanesa Duran** – Research Assistant II, Histopathology Core
- **Monique Johnson** – Sr. Program Coordinator, Endocrinology

- **Warda Merchant** – Research Assistant I, Hypothalamic Research
- **Troy Perez** – Program Coordinator, Department Administration
- **Cecily Washington** – Ambulatory Nurse Supervisor, Pulmonary & Allergy Clinic

## research roundup

### PUBLICATIONS

## Burstein and Colleagues Show Colonic EECs Control Appetite, Body Weight



**Ezra Burstein, M.D., Ph.D.**, a Professor and Chief of the Division of Digestive and Liver Diseases, and colleagues have found that endocrine cells in the gut (EECs) shape the composition and metabolism of resident bacteria, which in turn, regulate host functions through production of glutamate, with significant effects on appetite and body weight. The research, published in [Nature Metabolism](#), provides insight into the pathophysiology of obesity and suggests a possible bacterial target.

“While bacterial metabolism of undigestible nutrients contributes to host calories (up to 10 percent in humans), the mechanisms that sense and regulate this caloric flow have not been investigated,” Dr. Burstein says. “In this context, it is important to also consider that the colon, where this metabolism takes place, harbors most of our endocrine cells in the gut (EECs). This is the reason why we created a mouse model without colonic EECs.”

*Dr. Burstein holds the Berta M. And Dr. Cecil O. Patterson Chair in Gastroenterology.*

To learn more about Dr. Burstein’s research, visit the [Burstein Lab site](#).

### FUNDING OPPORTUNITY

## Kidney Cancer Program Announces Intramural Grant Competition

The Kidney Cancer Specialized Program of Research Excellence (SPORE) is sponsoring an intramural competition for three to six grants of \$25,000 to \$40,000 (direct costs) as part of its Developmental Research and Career Enhancement programs.

The **Developmental Research Program** supports high-risk/high-payoff projects and projects with translational projection. The **Career Enhancement Program** supports pilot projects from junior faculty in addition to established investigators refocusing their careers to include kidney cancer research.

Women and under-represented minority faculty are strongly encouraged to apply.

**James Brugarolas, M.D., Ph.D.**, a Professor in the Division of Hematology and Oncology and Director of the Kidney Cancer Program, and **Payal Kapur, M.D.**, a Professor of Pathology and Urology, are available to discuss potential projects.

Deadline for submission is **Monday, June 17**. Awardees will be notified on **Monday, July 22**.

*Dr. Brugarolas holds the Sherry Wigley Crow Cancer Research Endowed Chair in Honor of Robert Lewis Kirby, M.D.*

*Dr. Kapur holds the Jan and Bob Pickens Distinguished Professorship in Medical Science, in Memory of Jerry Knight Rymer and Annette Brannon Rymer and Mr. and Mrs. W.L. Pickens.*

For more information, contact Program Coordinator [Kathy Worland](#).

#### TEAM BUILDING

### CTSA to Present Behavioral Skills Module on Adaptation and Correction

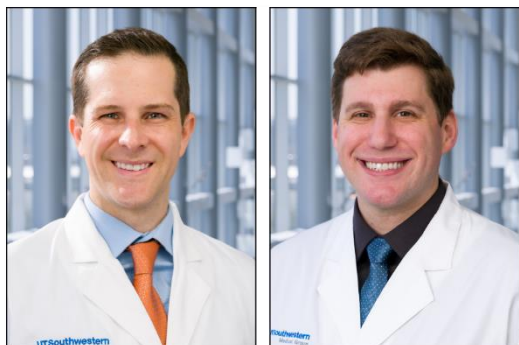
The Clinical and Translational Science Award (CTSA) Program will present a behavioral skills training program designed to increase collaboration and effectiveness of scientific teams on **Wednesday, June 5, at noon**. Presented by **Victoria Lutgen Gronau, Ph.D.**, a senior research scientist in the Department of Clinical & Translational Research, the TeamMAPPS (Team Methods to Advance Processes and Performance in Science) module will focus on the competencies of adaptation and correction.

To register for the virtual event, click [here](#).

## clinical practice

#### PATIENT CARE

### Sexual Health E-consult Service Now Available



**Paul Broker, M.D.**, an Assistant Professor in the Division of Combined Internal Medicine-Pediatrics and Medical Director of Student Health Services, and **Judah Gruen, M.D.**, an Assistant Professor in the Division of General Internal Medicine, have initiated a Sexual Health E-consult that is open to patients managed by faculty in all clinical departments.

Drs. Broker and Gruen are experts in sexual health, including pre-exposure prophylaxis (PrEP) for HIV, rapid start of HIV medication, rectal cell dysplasia screening, doxycycline post-exposure prophylaxis (Doxy-PEP), syphilis, other bacterial sexually transmitted infections (STIs), and related immunization questions such as those pertaining to human papillomavirus (HPV). The e-consult may also lead to telehealth visits to continue PrEP for patients managed by Drs. Broker and Gruen, if needed.

## alumni news

#### RECOGNITION

### Former Resident Jasmine Gaddy Honored by Arthritis Foundation



**Jasmine Gaddy, M.D.**, a Rheumatology Consultant with Indian Health Service Oklahoma, is this year's Medical Honoree for Walk to Cure Arthritis Oklahoma, in recognition of her work with the Native American community.

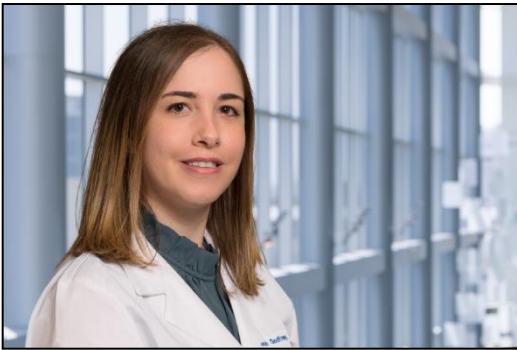
"For Dr. Gaddy, it is a personal mission to help underserved communities who may not have access to specialty care," according to the organization. "Nearly 13 years in, she continues to find gratitude in her field of work in Rheumatology. We are so grateful for Dr. Gaddy's dedication to her patients at Indian Health Services."

Originally from New Mexico, Dr. Gaddy received her medical degree from Temple University School of Medicine in Philadelphia. She then received internal medicine residency training at UT Southwestern and completed advanced training through a fellowship in rheumatology at the University of Oklahoma Health Sciences Center.

## in case you missed it

JAMA CARDIOLOGY

### Cardiology Fellow Writes Personal Account of Her Child's Brain Infection



**Sarah Godfrey, M.D., M.P.H.**, a Cardiology Fellow, recently wrote a personal account of when her newborn son developed parechovirus meningoencephalitis, a rare and severe brain infection. The account, published in [JAMA Cardiology](#), describes her family's experience from the child's first alarming symptoms to diagnosis and eventual treatment, all while she continued her fellowship program.

"I am training to be a palliative cardiologist, often delivering heartbreaking news, but I was not prepared to receive it as a mother," she writes. "Before [his] diagnosis, I would have said that our responsibility as physicians is to prepare families for

the worst possible outcome. But how can we balance honesty and hope? Could that neurologist have prepared us for the potentially devastating outcome while also allowing us to believe more was possible? When I enter critical illness conversations now, I remember my desperate need for hope when I faced a parent's worst nightmare."

Dr. Godfrey says a major feature of her story is how "overwhelmingly supportive and kind the GME leadership has been throughout my journey, both **Dr. Gail Peterson** (fellowship Program Director) and **Dr. Salahuddin Kazi** (Vice Chair of Education)."

### Articles and Videos Featuring Internal Medicine Colleagues

- [The New Age of AI is Dawning in Science and Medicine at UT Southwestern](#) (via UTSW Newsroom, with **Eric Peterson, M.D., M.P.H.**)
- [Leadless Dual-chamber Pacemaker is a Leap Forward for Heart Patients](#) (via *MedBlog*, with **James Daniels, M.D.**, and **Nimesh Patel, M.D.**)
- [Treating Hypertension](#) (via NOWINCLUDED on YouTube, feature **Shawna Nesbitt, M.D.**)

- [UT Southwestern Academy of Teachers Honors Outstanding Educators, Elects Seven New Members](#) (via *CT Plus*, with **Reuben Arasaratnam, M.D., M.P.H.**, **Rachel Bonnema, M.D., M.S.**, **Brad Cutrell, M.D.**, **David Greenberg, M.D.**, **Namirah Jamshed, M.D.**, **Hina Mehta, M.D.**, **Gary Reed, M.D.**, and **Christiana Renner, M.D., M.S.**)



**Internal Medicine News Portal**  
Click for more Department news and updates

## need to know

### ADVANCED PRACTICE PROVIDERS

## APP Achievement Award Nominations Now Open

To recognize the achievements made by UT Southwestern advanced practice providers (APPs), the Office of Advanced Practice Providers invites nominations for one of five Outstanding Achievement Awards.

Nominations will be accepted from **June 16 through July 26**. One APP will be selected for each of five categories: teaching, clinical practice, leadership, community and professional advocacy, and scholarly endeavors.

Nominees will be presented anonymously to the APP Recognition committee for final selection. Winners will be announced at the APP Celebration Week event on Thursday, Sept. 26.

To learn more about the awards and to submit a nomination, click [here](#). To learn more about APP Celebration Week, click [here](#).

## this week

### MOSS HEART CENTER SEMINAR SERIES

## Steven Owen Marx to Lecture on Adrenergic Signals on June 6



**Steven Owen Marx, M.D.**, a Professor of Medicine in the Division of Cardiology at Columbia University, will present the Moss Heart Center Seminar Series lecture on **Thursday, June 6, at noon** in F4.118. His topic: "Unraveling the Mechanisms of Fight or Flight: How the Heart Responds to Adrenergic Signals."

Dr. Marx holds a bachelor's degree in biology from Union College. He earned his medical degree at Albany Medical College as part of a six-year program. Following a one-year postdoctoral fellowship in ion channel research at Johns Hopkins, he completed an internship and residency at the

University of Rochester-Strong Memorial Hospital followed by a Cardiology Fellowship and a Clinical Electrophysiology Fellowship at Mount Sinai Medical Center.

He serves as Director of the Cardiovascular Fellowship Program at Columbia University Medical Center/New York-Presbyterian Hospital and is director of the cardiology component of a NIH training grant for cardiology fellows and surgery residents. He is also the principal investigator of several NIH R01 grants and a T32 grant.

To register for the retreat, click [here](#).

## Noteworthy Lectures & Events

- **Wednesday, June 5, 7 a.m.:** [Ob/Gyn Grand Rounds](#) with **Dr. Alvin Hyslop** (Obstetrics and Gynecology) – “Healthy Aging Beyond Menopause”
- **Thursday, June 6, 8 a.m.:** [Infectious Diseases Grand Rounds](#) with **Dr. Michael Shiloh** (Infectious Diseases & Geographic Medicine) – “Takeoff and Landing: Molecular and Cellular Mechanisms of Mycobacterium Tuberculosis Transmission”
- **Friday, June 7, 8 a.m.:** [Faculty Wellness Retreat](#) with **Dr. Jody Hoffer Gittel** (Brandeis University) – “Enhancing Efficiency, Embracing Trust to Maximize Professional Fulfillment”
- **Friday, June 7, 1 p.m.:** [Endocrinology Grand Rounds](#) with **Dr. Shubham Agarwal** (Endocrinology) – “Gaps in Guideline-Indicated Prescription of Cardio-renal Protective Agents in People with T2D and Cardio-renal Disease”

## reminders

### LEADERSHIP LECTURE SERIES

## Ahn to Speak on Transformational Communication on June 13



The Leadership Lecture Series concludes on **Thursday, June 13, at noon** with a presentation by **Christina Ahn, Ph.D.**, Leadership Coach in the Office of Women’s Careers. Her topic: “Transformational Communication Using Coaching Skills.”

All lectures are virtual, informal, and brown bag. Faculty, APPs, administrators, and trainees are welcome to attend.

To register for the virtual event, click [here](#).



## Internal Medicine Events Calendar

[Click to view additional events](#)

Look for the next *Medicine Minute* on **Tuesday, June 11, 2024**.  
Share feedback and news items with us at [IMNews@UTSouthwestern.edu](mailto:IMNews@UTSouthwestern.edu)

Copyright 2024 UT Southwestern Medical Center. All rights reserved.  
*Medicine Minute* is a publication of the Department of Internal Medicine at UT Southwestern Medical Center.

