

# dear residents

**Social Capital**

**May 21, 2023**

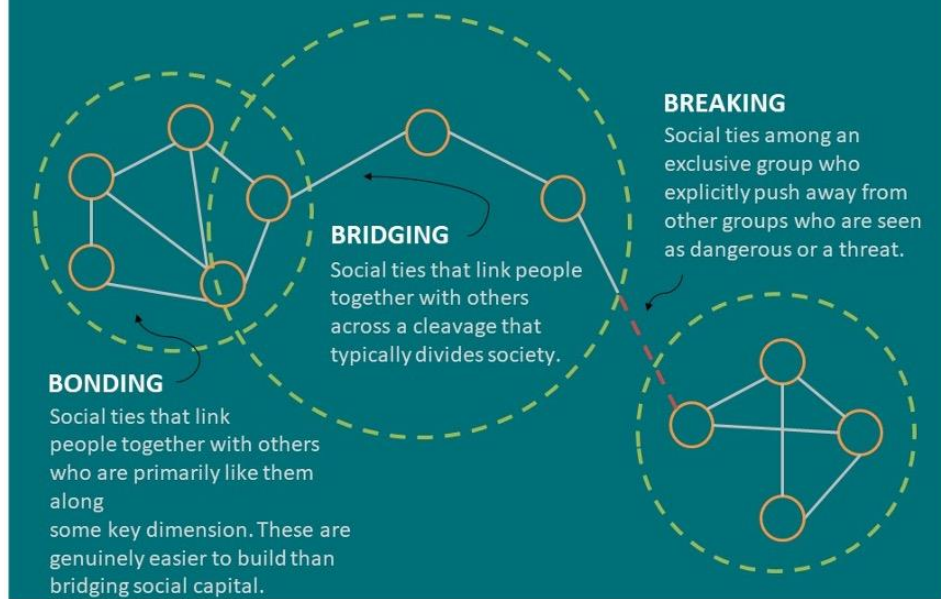
**Dear Residents,**

I hope you enjoyed the Graduation/Spring party. It's been nice to have events again on a regular basis. You spent so much of your time cloistered in the COVID years that it seems novel that we are gathering more often. Effectively we are earning social capital when we work and play together. In doing so, we are sharing our common values and goals and 'see' each other rather than just know that the other exists. The bonds of residency develop through socialization whether at work or after work. I am grateful that we have the resources to plan these important events.

When we gain social capital, we see each other in our entirety rather than as 'my senior' or 'my intern' or 'my attending.' When we build networks, we have both strong ties and weak ties – the trusted few and a larger group of people we can lean on or learn from. I am certain that there are a few very close colleagues for each of you, and increasing larger circles of your firm family, your PGY group and then the entire residency and beyond that, your colleagues in other residencies and fellowships.

The origins and theory of social capital are more complex than my cursory use of the term. It is an interesting concept. If you want to read more about it here is a good place to start <https://mercatornet.com/putnam-social-capital/78409/>. You can also take a [social capital quiz](#).

## Putnam's types of social capital:



<https://belonging.berkeley.edu/infographics-social-capital>

As you graduate from UT Southwestern, know that this network you have developed will support you for years to come.

Warm regards,

Dino Kazi