

children'shealth[®]

UT Southwestern
Medical Center[™]

fellowship program

PEDIATRIC CARDIOLOGY



message from the fellowship directors

Welcome and thank you for your interest in the Pediatric Cardiology Fellowship Program at the University of Texas Southwestern Medical Center! We are excited to highlight the world-class training available in our Heart Center. We pride ourselves on training the next generation of outstanding pediatric cardiologists, researchers and educators.

The mission of our fellowship program is to prepare trainees for careers in academic pediatric cardiology. We accomplish this through a three-year program with substantial exposure to a broad spectrum of congenital and acquired heart defects and extensive time spent in basic, clinical or translational research. Educational opportunities are tailored to suit the needs and interest of each fellow. Over the course of their fellowships, our fellows progress from beginner to advanced with the appropriate amount of supervision. Fellows gain responsibilities as they learn, developing the necessary foundation first.

We are very proud of the quality of our fellowship program and the fellows we train – and we hope it shows! If you have any questions, please don't hesitate to reach out.



SONALI PATEL, M.D., PH.D.
Program Director
sonali.patel@utsouthwestern.edu



MELINDA CORY, M.D.
Associate Program Director
melinda.cory@utsouthwestern.edu



KRISTY FRIEL
Program Coordinator
kristy.friel@utsouthwestern.edu

table of contents

cardiology faculty	1 - 2
curriculum	3 - 6
Acute Care Cardiology.....	3
Inpatient Consultation Service	3
Cardiac Intensive Care	3
Pediatric Advanced Cardiac Care	4
Imaging	4
Electrophysiology	4
Cardiac Catheterization	4
Continuity Clinic	5
Research/Scholarly Activity.....	5
Clinical Science Opportunities.....	5 - 6
Advanced Imaging	5
Echocardiography.....	5
Electrophysiology.....	5
Interventional Cardiology	6
Registry-based Research.....	6
Basic Science Opportunities.....	6
Research Education	6
teaching and didactic activities	7
teaching institutions	8
fourth-year fellowship positions	9
alumni	10
current fellows	11 - 12
living in Dallas	13 - 14
benefits and housing	15
eligibility and application procedure	16

cardiology faculty

Nicolas Madsen, M.D., is the division director for Pediatric Cardiology and the co-director of The Heart Center with Robert “Jake” Jaquiss, M.D. (Chief of Cardiac Surgery). Many of our team members enjoy national and international reputations as leaders in pediatric cardiology.

NICOLAS MADSEN, M.D., MPH
Professor
Chief of Cardiology
Co-Director of The Heart Center

YOUSEF ARAR, M.D., MPH
Assistant Professor
Cardiac Catheterization

SRAVANI AVULA, M.D.
Assistant Professor
Acute Care Cardiology

NATHANYA BAEZ HERNANDEZ, M.D.
Assistant Professor
Pediatric Advanced Cardiac Care

SIRINE BALTAGI, M.D.
Associate Professor
Cardiac Critical Care

MARIA BANO, M.D.
Associate Professor
Pediatric Advanced Cardiac Care

PRIYA BHASKAR, M.D.
Associate Professor
Cardiac Critical Care

RAMYA BILLA, MBBS
Assistant Professor
Cardiac Critical Care

SARAH D. BLUMENSCHIN, M.D.
Clinical Associate Professor
Preventive Cardiology

RYAN BUTTS, M.D.
Associate Professor
Pediatric Advanced Cardiac Care
(Director)

RADOMIR CHABINIOK, M.D., PH.D.
Associate Professor
Research

MELINDA CORY, M.D.
Assistant Professor
Cardiac Critical Care

ABHAY DIVEKAR, MBBS
Professor
Cardiac Catheterization

JORDAN EZEKIAN, M.D., MPH
Assistant Professor
Electrophysiology

MUNES FARES, M.D.
Assistant Professor
Advanced Cardiac Imaging

DAVID FIXLER, M.D.
Professor
General Cardiology

MANSI GAITONDE, M.D.
Assistant Professor
Advanced Cardiac Imaging

LASYA GAUR, M.D.
Associate Professor
Advanced Cardiac Imaging
(Director)

ERIN GORDON, D.O.
Clinical Associate Professor
Cardiac Critical Care

F. GERALD GREIL, M.D., PH.D.
Professor
Advanced Cardiac Imaging

MEGAN GRIFFITHS, M.D.
Assistant Professor
Pulmonary Hypertension

KATIE HANSEN, M.D.
Assistant Professor
Sports Cardiology

BRITTNEY HILLS, M.D., M.ED.
Assistant Professor
Acute Care Cardiology

TARIQUE HUSSAIN, M.D., PH.D.
Professor
Advanced Cardiac Imaging
(Director)

CATHERINE M. IKEMBA, M.D.
Associate Professor
Advanced Cardiac Imaging
(Director)

MEHREEN IQBAL, M.D.
Assistant Professor
Pediatric Advanced Cardiac Care

COLIN E. KANE, M.D.
Associate Professor
General Cardiology

JENNA KEELAN, M.D.
Assistant Professor
Advanced Cardiac Imaging

JAVIER LASA, M.D.
Associate Professor
Cardiac Critical Care
Director of Informatics
and Strategy

MATTHEW S. LEMLER, M.D.
Professor
Advanced Cardiac Imaging
Director of Clinical Services

MELODIE LYNN, D.O.
Assistant Professor
Pediatric
Advanced Cardiac Care

LYNN MAHONY, M.D.
Professor
General Cardiology

SADIA MALIK, M.D., MPH
Associate Professor
Preventive Cardiology
(Director)

MOLLY MCGETRICK, M.D.
Assistant Professor
Cardiac Critical Care

ROHIN MOZA, M.D.
Assistant Professor
Cardiac Critical Care

HOANG NGUYEN, M.D.
Associate Professor
Electrophysiology

SONALI PATEL, M.D., PH.D.
Associate Professor
Acute Care Cardiology
(Director)
Director of Education

LAURA RADEL, M.D.
Assistant Professor
Pediatric Advanced Cardiac Care

CLAUDIO RAMACIOTTI, M.D.
Professor
Advanced Cardiac Imaging

KAVITA SHARMA, M.D.
Assistant Professor
Advanced Cardiac Imaging

STEPHEN SPURGIN, M.D.
Assistant Professor
Research/General Cardiology

SUREN VEERAM REDDY, M.D.
Associate Professor
Cardiac Catheterization
(Director)

JOSHUA WOLOVITS, M.D.
Associate Professor
Cardiac Critical Care
(Director)

STEPHAN WU, M.D.
Assistant Professor
Cardiac Catheterization

SONIA VOLETI, M.D.
Clinical Assistant Professor
General Cardiology

PRISCILLA YU, M.D.
Assistant Professor
Cardiac Critical Care

THOMAS M. ZELLERS, M.D.
Professor
Cardiac Catheterization
VP, Medical Staff Affairs

QING ZOU, PH.D.
Assistant Professor
Research

additional Heart Center faculty

Cardiac Surgery

ROBERT “JAKE” JAQUISS, M.D.
Professor
Chief of Cardiac Surgery
Co-Director of The Heart Center

NICHOLAS ANDERSEN, M.D.
Associate Professor
Cardiac Surgery

RYAN DAVIES, M.D.
Associate Professor
Cardiac Surgery

STEVEN LEONARD, M.D.
Clinical Professor
Cardiac Surgery

KARL REYES, M.D.
Associate Professor
Cardiac Surgery

Cardiac Anesthesia

LUIS ZABALA, M.D.
Professor
Cardiac Anesthesia
(Director)

MOHAMMED IQBAL AHMED, M.D.
Professor
Cardiac Anesthesia

MIKEL GORBEA, M.D.
Assistant Professor
Cardiac Anesthesia

INGRID MORENO DUARTE, M.D.
Assistant Professor
Cardiac Anesthesia

ROBY SEBASTIAN, M.D.
Assistant Professor
Cardiac Anesthesia

GARY TURNER, M.D.
Cardiac Anesthesia

SANA ULLAH, M.D.
Associate Professor
Cardiac Anesthesia

Pediatric Heart Specialists

ALAN SING, M.D.
General Cardiology
(Director)

SHANNON BLALOCK, M.D.
General Cardiology

POOJA DESAI, M.D.
General Cardiology

CHRISTY GLASOW, M.D.
General Cardiology

PENN LAIRD JR., M.D.
General Cardiology

TRACY LAIRD, M.D.
General Cardiology

ANDREW LASHUS, M.D.
General Cardiology

BRIAN SNARR, M.D., PH.D.
General Cardiology

AMIT VERMA, M.D.
General Cardiology

Critical Care

SAMUEL DAVILA, M.D.
Clinical Associate Professor
Critical Care

MICHAEL GREEN, M.D.
Associate Professor
Critical Care

OLIVIA HOFFMAN, M.D.
Assistant Professor
Critical Care

JESSICA MORELAND, M.D.
Professor
Critical Care
Associate Dean of Faculty Affairs
(Director)



curriculum

Over the course of three years, each fellow is exposed to a wide breadth of cardiology. The exact schedule is determined in part by the fellow's interest, career goals and previous experience, but a sample schedule is described below. We follow a four-week block system, resulting in 13 blocks each year.

	first year	second year	third year
Acute Care Cardiology	1.5	1	1
Inpatient Consultation	1	1	1.5
Cardiac Intensive Care	1	1.5	1
Heart Failure/Advanced Therapies/Transplantation	1	1	1
Imaging	2.5	1	1
Electrophysiology	1	0	1
Cardiac Catheterization	1.5	1	0
Adult Congenital Heart Disease	0	1	0
Research	3	4.5	5.5
Elective/Other	0.5	1	1

Acute Care Cardiology

The fellow on inpatient service in the acute care cardiology unit is responsible for following all cardiology inpatients alongside the attending cardiologist. Fellows are encouraged to participate in teaching discussions with the residents, advanced practice providers and the attending physician. During the fellowship, the fellow assumes increasing responsibility for patient management.

Inpatient Consultation Service

The fellow on the inpatient consult service works alongside advanced practice providers to provide cardiac consultation to patients in the CVICU, general pediatric services, NICU and Emergency Department. The fellows also provide consultation services to the newborn nurseries and NICU at Parkland Hospital and Clements University Hospital. The fellows work under the supervision of the attending cardiologist. The fellow assumes increasing responsibility with each rotation.

Cardiac Intensive Care

The fellow is responsible for managing critically ill patients in the cardiac intensive care unit, working with the attending cardiac intensivist, the on-service consulting cardiologist and the cardiac surgeons. Our center performs over 500 cardiac surgeries each year. During this rotation, the fellow becomes skilled in caring for neonates with congenital heart disease, postoperative patients as well as heart failure and transplant patients, understanding their physiology, and managing their various comorbidities and complications. In addition, the fellow will become familiar with cardiac anatomy, as visualized by the surgeon, and with techniques of cardiopulmonary bypass.

Pediatric Advanced Cardiac Care (Heart Failure/Advanced Therapies/Transplantation)

The heart failure, advanced therapies and transplantation service is managed by the pediatric advanced cardiac care team. We are a high-volume transplantation program with around 20 heart transplants per year. Additionally, we have a robust heart failure service with exposure to mechanical circulatory devices. Around 15 ventricular assist devices are placed each year with these patients being followed both in the inpatient and the outpatient setting. The fellow will attend transplant clinic and help manage the patients in the hospital who are being evaluated for transplantation, awaiting transplantation or are status post-transplantation.

Imaging

The goal of this rotation is for the fellow to acquire skills necessary for performing and interpreting echocardiographic studies. More than 13,000 echocardiograms (including transthoracic, transesophageal and fetal studies) are performed each year, which offers the opportunity for the trainee to be exposed to a wide variety of complex congenital/acquired heart diseases. Fellows have the opportunity to perform the initial scan. Education is available in twice-weekly echocardiographic conferences and on a daily basis by sonographers and readers. During the second and third years, the fellow gains experience in specialized areas such as transesophageal, fetal and exercise stress echocardiography. An advanced cardiac imaging elective, including cardiac MRI and cardiac CT, is also offered. In partnership with the Department of Radiology, the UT Southwestern Pediatric Cardiology Program is a leader in the field of CMR in patients with acquired and congenital heart disease. Our program combines technology, physics and clinical care to provide the most comprehensive cardiac evaluations for patients. We have a magnet in The Heart Center that is primarily dedicated to cardiac imaging and is physically located next to the catheterization lab, allowing hybrid procedures to be performed. As part of imaging training at UTSW, fellows will have extensive exposure to cardiac MRI and cardiac CT. With over 500 cardiac CTs and 1,000 cardiac MR procedures, fellows will learn how cardiac MRI, CT and echocardiography work together to answer critical questions for each cardiovascular lesion. They will also be exposed to image acquisition techniques, study interpretation and quantitative analysis. Advanced techniques such as 3D reconstruction, including 3D printing, will also be covered.

Electrophysiology

Our electrophysiology service is very active. During this rotation, the fellow is exposed to all aspects of clinical electrophysiology. The fellow will become proficient in interpreting electrocardiograms and 24-hour recordings, performing and interpreting transesophageal ECG recordings, and assessing pacemaker and implanted cardioverter defibrillator (ICD) function. About 20,000 electrocardiograms are performed each year. More than 250 pacemaker patients are currently in active follow-up and about 30 devices are implanted each year. In addition, the fellow participates in electrophysiologic studies and catheter ablation procedures. Typically, 100 electrophysiology studies and catheter ablations are performed annually.

Cardiac Catheterization

We offer a full range of interventional procedures with nearly 600 total catheterizations performed last year. The cardiac catheterization laboratories are comprised of two angiographic suites, which are hybrid capable. Both laboratories are state of the art and are in the interventional suite of The Heart Center. The catheterization laboratories have direct access to pre-op and recovery, cardiac OR, MRI and CVICU.



Continuity Clinic

The fellow will be assigned to work with a faculty member in outpatient clinic one half day per week. Patients in this clinic will consist of a wide variety of general cardiology problems, including pre-operative, post-operative and new patient evaluations. The goal of this experience is to provide a continuum of patient contact so the fellow can appreciate the natural history of selected clinical problems and work closely with an attending cardiologist to learn how to develop a good doctor/patient relationship.



Research/Scholarly Activity

Research training is a major focus of the fellowship training program, and fellows are provided substantial protected time throughout their fellowship to engage in rich research experiences. The research program is designed to provide comprehensive scholarly training that prepares all trainees with the background and skills to successfully compete for academic faculty positions and extramural funding at the completion of their fellowship. Although many cardiology fellows are mentored by a faculty member within the section, the program encourages fellows to consider a broad range of potential mentors.

Each fellow is assigned a Scholarly Oversight Committee (SOC), composed of at least three faculty members. The SOC meets every six months to evaluate the fellow's scholarly progress and to help provide support and direction. At the end of training, the SOC is responsible for determining whether the fellow's work has met the American Board of Pediatrics requirement for sub-board eligibility.

Clinical Science Opportunities

A majority of pediatric cardiology faculty members are active in clinical research, providing our fellows numerous opportunities to participate in a wide variety of projects. Brief highlights of some research efforts within pediatric cardiology include:

ADVANCED IMAGING

- The pediatric CMR section is on the forefront of research with frequent collaboration with our colleagues at UTSW, including using CMR, CT and echocardiographic data to produce 3D-printed hearts for surgical planning and research. We have access to the Advanced Imaging Research Center, UTSW's research program dedicated to MRI research, and includes access to one of the few 7-Tesla CMR scanners used in human research.

ECHOCARDIOGRAPHY

- In addition to continually improving the quality of imaging and its impact on clinical care, research interests of faculty include congenital coronary anomalies, predicting/diagnosing rejection in heart transplant recipients utilizing strain imaging, improving assessment of progressive left ventricular systolic dysfunction in patients with myopathies, and reducing interstage mortality by frequent echocardiographic monitoring of single ventricle patients.

ELECTROPHYSIOLOGY

- Research activities in electrophysiology include investigation of arrhythmias in patients with complex congenital heart disease. One example is evaluation of specific arrhythmia patterns in patients with heterotaxy syndromes. Additional projects include evaluation of the impact of electrical storms in ICD patients, analysis of sudden-death risk in hypertrophic cardiomyopathy, and data collection to refine ECG normative criteria based upon race. Database development is underway to comprehensively evaluate the epidemiology and prevention of sudden cardiac death from all causes.

INTERVENTIONAL CARDIOLOGY

- The interventional group is very active in clinical and pre-clinical research. Among many other things, we are known for our interventional MRI (ICMR) procedures in complex CHD patients and lymphatic evaluation and intervention program. We were one of the first four centers involved in the Alterra/Sapien valve early feasibility trial. We did and continue to participate in several multicenter clinical trials, including Melody, Harmony and the current Alterra and Compassions S3 and Resilia pulmonary valve studies. We are also participating in the PIVOTAL (PDA) and COMPASS (shunt vs stent) trial.

REGISTRY-BASED RESEARCH

- Our group is very involved in registries! We are participants in the PC4, PAC3, ACTION, IMPACT, C3PO, CCISC and CCRC, just to name a few. Many faculty are active in research and quality improvement initiatives within these registries, which provides opportunities for fellow involvement.

Basic Science Opportunities

UT Southwestern Medical Center has an international reputation as a leading research institution. Based on federal research grant support for basic sciences, UT Southwestern is among the top 10 biomedical research institutions in the country. A vast array of research opportunities is available in cardiovascular biology, as UT Southwestern currently boasts one of the largest concentrations of investigators in this exciting area of science. In general, most fellows focusing on basic science research will likely spend a total of four years in their training. Grants are available through the Physician Scientist Training Program at UT Southwestern or the Reynolds Foundation to assist in funding for these additional years.

Research Education

All fellows receive education in research methodology through the fellowship core curriculum. Additionally, we have a monthly statistics course the fellows attend. Additional extensive resources to support clinical research are available through the Clinical and Translational Science Awards (CTSA), a national consortium funded through the National Institutes of Health's National Center for Research Resources, with the primary aim of creating a definable academic home for the disciplines of clinical and translational research.



teaching and didactic activities



COMBINED CARDIOLOGY/CT SURGERY CONFERENCE

In this conference, fellows learn all the important clinical, imaging and hemodynamic data that is necessary to review prior to proceeding with surgery. They present the patients under the guidance of faculty mentors and participate in discussions surrounding surgical candidacy.

CORE CONFERENCE

This conference contains lectures from faculty members in many different areas of cardiology, including pathology, intensive care, heart failure and transplant, pulmonary hypertension, exercise physiology, cardiac catheterization, electrophysiology and cardiac surgery, to lay the foundation of cardiac knowledge.

ECHOCARDIOGRAPHY CONFERENCE

Education is available in twice-weekly echocardiographic conferences attended by imaging faculty, sonographers and fellows.

RESEARCH CONFERENCE

This is a series of conferences in which fellows and faculty members share their ongoing research projects throughout the year. Second- and third-year fellows participate in this conference to introduce their research projects, obtain ongoing guidance and practice for presentations at national meetings.

MORBIDITY AND MORTALITY CONFERENCE

In this conference, fellows, under the guidance of a faculty mentor, review cases that have significant morbidity and mortality and quality measures to improve the standard of care.

JOURNAL CLUB

This conference is a critical review of pertinent medical literature and journal articles by topics, conducted in the form of a debate to engage and encourage active participation of fellows and faculty.

BOARD REVIEW

Board review sessions organized by faculty members occur monthly. These sessions focus on high-yield content with board-style questions.

BOOK CLUB

Book Club occurs once a month and is run by the cardiology fellows. Chapters from the Moss and Adams textbook are presented by a fellow monthly. A faculty mentor is assigned for each chapter and is available for discussion and questions.

DEPARTMENT OF PEDIATRICS FELLOWS' CORE CURRICULUM CONFERENCE

This is a conference designed to provide instruction in various subjects required by the ACGME and American Board of Pediatrics that are common to all fellows.

GRAND ROUNDS

One of the mainstays of the Department of Pediatrics is its Grand Rounds held every Wednesday morning. It's an opportunity for attendings and faculty from outside UTSW to share up-to-date, evidence-based medicine practices and groundbreaking research.

teaching institutions

UT Southwestern Medical Center is a top-ranked, multifaceted academic institution nationally recognized for its excellence in educating physicians, biomedical scientists and other health care professionals. The Heart Center at Children's Health,SM an affiliated nonprofit pediatric health system, offers a comprehensive program of specialized care for children with congenital and acquired heart diseases.

The Medical Center is comprised of the UT Southwestern Medical School, UT Southwestern Graduate School of Biomedical Sciences and UT Southwestern School of Health Professions. These three schools currently train about 3,600 medical, graduate and health professions students, residents and postdoctoral fellows each year. Six UT Southwestern faculty members have been awarded Nobel prizes, while 15 Howard Hughes Medical Institute investigators are currently on faculty. Additionally, UT Southwestern supports over 5,800 research projects with nearly \$455 million in annual funding. Primary pediatric cardiology clinical facilities are located immediately adjacent to UTSW.

Most of the pediatric clinical work is done at Children's Medical Center Dallas, which is part of the Children's Health System of Texas. We also provide outpatient and consultation services at Children's Medical Center Plano and in various outreach clinics. Children's Health is a private, not-for-profit institution that was established more than 100 years ago. Today, Children's Health is licensed for 616 beds and features a 44-bed pediatric intensive care unit, a 30-bed pediatric cardiac intensive care unit, a 90-bed neonatal intensive care unit and a 22-bed acute care cardiology unit. We have a large outpatient clinic seeing an average of 38 outpatients daily, as well as multiple outreach clinics.

Cardiology care is provided through The Heart Center, which includes two cardiac catheterization laboratories, a hybrid cath-MRI suite, additional MRI facilities within The Heart Center, a pre-procedure and recovery room, echocardiography examination rooms, a sedation room, fetal cardiology, exercise and electrocardiography (including pacemakers) work areas, outpatient consultation facilities, faculty, fellow, nursing, and administrative offices, a library, conference rooms and administrative staff, all located in one central area. Consultations are performed on newborn infants born at Parkland Hospital. About 12,000 infants are born each year at Parkland. The 93,000-square-foot neonatal intensive care unit has 96 single-patient rooms. Parkland also houses 106 well newborn infant-mother rooms. Additionally, consultations are provided in the NICU at Clements University Hospital.

Additionally, adults with congenital heart disease are cared for at Parkland and at William P. Clements Jr. University Hospital (one of UT Southwestern's two university hospitals) and seen in consultation at Children's Health and Clements.



Children's Medical Center



William P. Clements Jr. University Hospital



Parkland Hospital

fourth-year fellowship positions

We offer additional fourth-year training in cardiac critical care, advanced cardiac imaging, interventional cardiology, advanced cross-sectional imaging and heart transplantation. Additional training is also available in research. The structure of these experiences depends on the interests and skills of the individual fellow. If you are interested in a fourth-year position, please contact one of the following individuals:



pediatric cardiac critical care

PRIYA BHASKAR, M.D.
priya.bhaskar@utsouthwestern.edu



interventional cardiac catheterization

SUREN REDDY, M.D.
suren.reddy@utsouthwestern.edu



pediatric advanced cardiac care heart failure/advanced therapies/transplantation

RYAN BUTTS, M.D.
ryan.butts@utsouthwestern.edu



advanced cardiac imaging

CLAUDIO RAMACIOTTI, M.D.
claudio.ramacioti@utsouthwestern.edu



advanced cardiac cross-sectional imaging

TARIQUE HUSSAIN, M.D., PH.D.
mohammad.hussain@utsouthwestern.edu

alumni

2013

GREG BARKER, M.D.
Electrophysiology
Cook Children's Medical Center
Fort Worth, TX

HOLLY DESENA, M.D.
General Cardiology
Atrium Health
Hickory, NC

2014

CLARISA GARCIA, M.D.
General Cardiology
Children's Health
Houston, TX
(Director)

CARRIE HERBERT, M.D.
Cardiac Catheterization
Medical City Hospital
Dallas, TX

2015

DAVID SUTCLIFFE, M.D.
Cardiac Transplantation/Heart Failure
Children's Mercy Hospital
Kansas City, MO

MELISSA WEBB, M.D.
Cardiac Catheterization
Texas Children's Hospital
Houston, TX

2016

KEVIN ENGELHARDT, M.D.
Cardiac Critical Care
Phoenix Children's Hospital
Phoenix, AZ

NICHOLAS HUGGINS, M.D.
Cardiac Critical Care
Phoenix Children's Hospital
Phoenix, AZ

BAO "ROBYN" PUENTE, M.D.
Cardiac Critical Care
Children's National Hospital
Washington, DC

2017

RACHEL JAMISON, M.D.
General Cardiology
Hope Ignited
(Director)

DANIELLE MOYÉ, M.D.
Advanced Cardiac Imaging
Cook Children's Medical Center
Fort Worth, TX

2018

JERRY MICHAEL, M.D.
General Cardiology
Driscoll Children's Hospital
Corpus Christi, TX

ANDREW TRAN, M.D.
Preventive Cardiology
Nationwide Children's Hospital
Columbus, OH

2019

SILVESTRE DURAN, M.D.
General Cardiology
University Hospitals Rainbow Babies
& Children's Hospital
Cleveland, OH

RICHARD MARKUS, M.D.
General Cardiology
Heart Center for Children
Medical City Hospital
Dallas, TX

2020

YOUSEF ARAR, M.D.
Cardiac Catheterization
UT Southwestern Medical Center
Dallas, TX

2021

MEHAR HODA, M.D.
General Cardiology
West Virginia University
Morgantown, WV

RAVI VAMSEE, M.D.
Advanced Cardiac Imaging
Children's National Hospital
Washington, DC

2022

COURTNEY OCHOA, M.D.
General Cardiology

JAMIE WELLER, M.D.
Cardiac Critical Care
Children's Hospital of Philadelphia
Philadelphia, PA

GIANA ROMERO, M.D.
CVICU Hospitalist
UT Southwestern Medical Center
Dallas, TX

STEPHEN SPURGIN, M.D.
Research/General Cardiology
UT Southwestern Medical Center
Dallas, TX

2023

MANAL ALQAHTANI, MBBS
Advanced Cardiac Imaging Fellow
UT Southwestern Medical Center
Dallas, TX

VIDHI MAKANJI, M.D.
Pediatric Palliative Care Fellow
UT Southwestern Medical Center
Dallas, TX

DRISHTI TOLANI, MBBS
Advanced Cardiac
Transplantation/Heart Failure
Fellow
Stanford University
Palo Alto, CA

current fellows



ANUSHA KODIDHI, M.D.
First year



MATTHEW MOSGROVE, M.D.
First year



NATALIA TESTO, D.O.
First year



PEZAD DOCTOR, MBBS
Third year



LAUREN THAI, M.D.
Third year



AYA EL JERBI, M.D.
Fourth year



**BYRD CICERO WILLIS
PINEDA, M.D.**
First year



SARA ALHOUSSEINY, M.D.
Second year



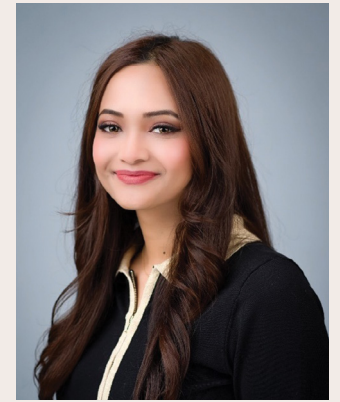
MOHAMMAD MEHDI, MBBS
Second year



MANAL ALQAHTANI, MBBS
Fourth year



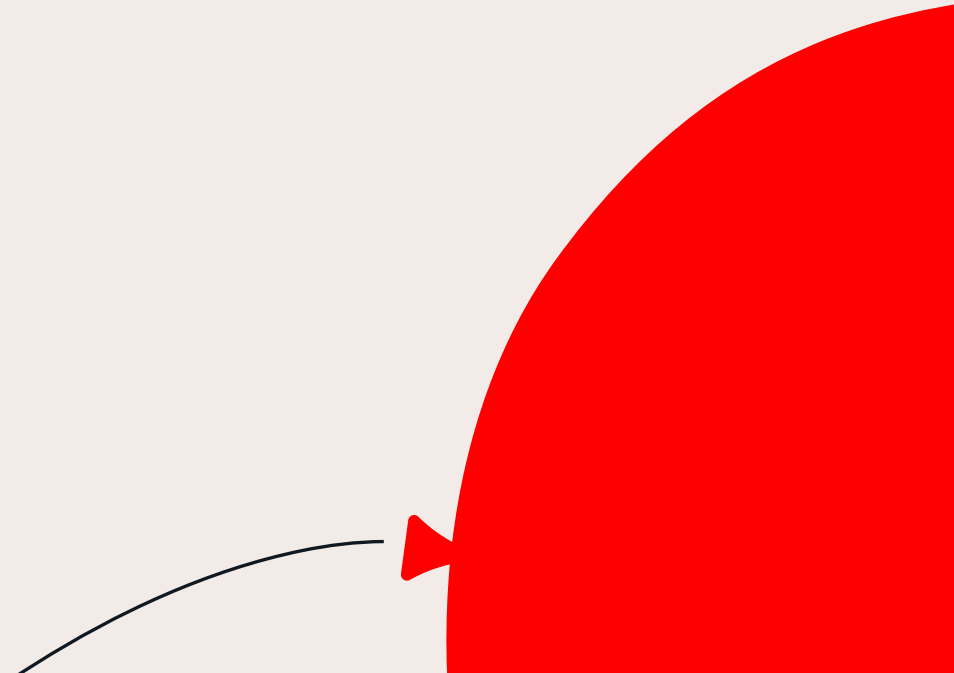
MARIA OSSA GALVIS, M.D.
Fourth year



TAYABA MIAH, M.D.
Fourth year



SARAH ZORETIC, D.O.
Second year





living in Dallas

Located in north central Texas, Dallas and its surrounding communities are growing rapidly and have a population of nearly 3 million people. **One of Dallas' most important assets is its highly diversified economy, which provides broad employment opportunities for two-career families.** Dallas enjoys one of the most sustained growth records of any major metropolitan center in the country. It is consistently a destination of choice for young professionals, having one of the most stable housing markets, a strong public and private school system and a low cost of living. Due to a diverse population, Dallas benefits from rich ethnic inspirations that infuse the neighborhoods, street festivals, food and culture of the city.

This national and international spirit is furthered by close proximity to one of the largest airports in the nation, DFW International (25 minutes from UT Southwestern), from which one can fly nonstop to many locations in the U.S. and internationally.

In addition, Love Field Airport, which is less than three miles from UT Southwestern, is served primarily by Southwest Airlines and allows one to fly to many locations at relatively low prices. **There is no state or city income tax, and local property taxes and the cost of living are lower than in most of the nation's large metropolitan centers.** As a result of all these factors, many major organizations have selected Dallas as the location for their corporate headquarters.

Food and culture feed Dallas with dozens of world-class restaurants, not to mention those in Fort Worth less than an hour away. Dallas has one of largest urban arts district in the country. It includes world-class art museums such as the Nasher Sculpture Center and the Dallas Museum of Art, while Fort Worth offers the Kimbell Art Museum and the Modern Art Museum. The area boasts a top 10 ballet company (Texas Ballet Company), a top 10 opera company (Dallas Opera Company), the Dallas Theatre Company and the Dallas Symphony Orchestra.

If the visual and performing arts are not your scene, pop culture is all around us too. Dallas has a vibrant night life with live music at intimate venues like the House of Blues and the Granada Theatre, as well as at large arenas such as the American Airlines Center and AT&T Stadium (home of the Dallas Cowboys), **not to mention one of the largest local music festivals, at Austin City Limits, just down the road.**

To add to this plethora of activities are a variety of movie theaters showing the nation's leading first-run movies as well as independent and foreign pictures.

And then there are the malls. Many in Dallas believe shopping is the city's official sport. Even so, that's not the only sport in Dallas. **In fact, Dallas is one of only 13 cities in the country with all four major professional sports teams, including football (Cowboys), baseball (Rangers), ice hockey (Stars) and basketball (Mavericks), along with soccer (FC Dallas).** We also host the AT&T Byron Nelson PGA tournament, drawing the nation's best golfers.

Yes, it is warm here during the summer, but we know how to utilize proper air conditioning. It is often wonderfully sunny and warm here in the winter when others are buried in snow and ice. Many outdoor recreational activities are also available, and because of the mild climate, can be pursued year-round. Boating, fishing and water skiing are particularly popular in the numerous public lakes surrounding Dallas.

The city of Fort Worth offers additional museums and cultural activities, and Dallas is also a brief drive from the state capital, Austin, and the picturesque Texas Hill Country outside of Austin.

More information about Dallas can be obtained from visitdallas.com and listings.guidelive.com.



benefits and housing

Salary and Health Care Benefits

UT Southwestern offers salary and benefits packages that are competitive with other fellowship programs across the country. Current salary levels can be found at utsouthwestern.edu/education/graduate-medical-education/fellowships/#salaries.

Leave Policy

Fellows are allowed at least four weeks of paid vacation per year of fellowship training. In addition, there are 10 to 11 paid holidays each year. If you are assigned to work on a holiday, you get a “comp” day. Additional leave (e.g., pregnancy, illness and family issues) is at the discretion of the Program Director; however, trainees must complete 33 months of training over the course of three years. When leave is more than three months, the trainee will be required by ACGME guidelines to extend the training period to complete 33 months of training.

Other Benefits

The program provides support for the purchase of several standard textbooks, journal subscriptions, membership dues in major professional societies and computer software. There is an annual stipend for meetings. Attendance at and participation in scientific professional meetings is an important part of the educational experience. All fellows have a dedicated workspace in a fellow office.

Housing

Dallas offers a wide variety of housing options, ranging from high-rise apartments to homes on tree-lined streets in established neighborhoods. One-bedroom apartments can be rented for \$1,200 to \$1,600/month within 20 minutes of campus. Free parking is available in a garage attached to the hospital.

eligibility and application procedure

To be considered, applicants must have completed a fully accredited pediatric residency training in North America prior to fellowship. Fellowship applicants must be board certified in pediatrics by the American Board of Pediatrics (ABP) or must be eligible to take the ABP general pediatric examination during the first year of fellowship training. In addition, graduates of foreign medical schools must possess a valid ECFMG certificate. We do accept applications from persons holding J-1 visas. According to institutional policy, we cannot accept applications from anyone holding any type of H visa at the time of application.

We have positions for four fellows each year. You can apply to the UT Southwestern Pediatric Cardiology Fellowship Program through the Electronic Residency Application Service (ERAS) website (aamc.org/students/medstudents/eras/fellowship_applicants/).

We participate in the Pediatric Cardiology Fellowship Match Program administered by the National Resident Matching Program (NRMP).

Application Requirements Checklist

Please submit all documents through ERAS.

- Recent photograph
- Personal statement
- Letters of recommendation (maximum of four letters)
 - A member of the Division of Pediatric Cardiology at your residency training institution
 - Residency program director or department chair
 - Research mentor (if applicable)
 - An attending of your choosing
- Dean’s letter and evaluation
- Medical school transcript
- Copies of USMLE scores or COMLEX scores (If step 3 not taken, please indicate date exam is to be taken)
- Copy of immigration visa (if applicable, send directly to Program Coordinator)
- Education Commission for Foreign Medical Graduates (ECFMG) certificate (if applicable)

Application Selection Timeline

- july:** MyERAS opens to applicants
- late july:** Deadline for application submission and all supplementary materials
- early August:** Interview invites extended
- august to october:** Selected applicants virtually interviewed
- mid-november:** Rank lists submitted
- late november:** Match results announced



making life better for children.

